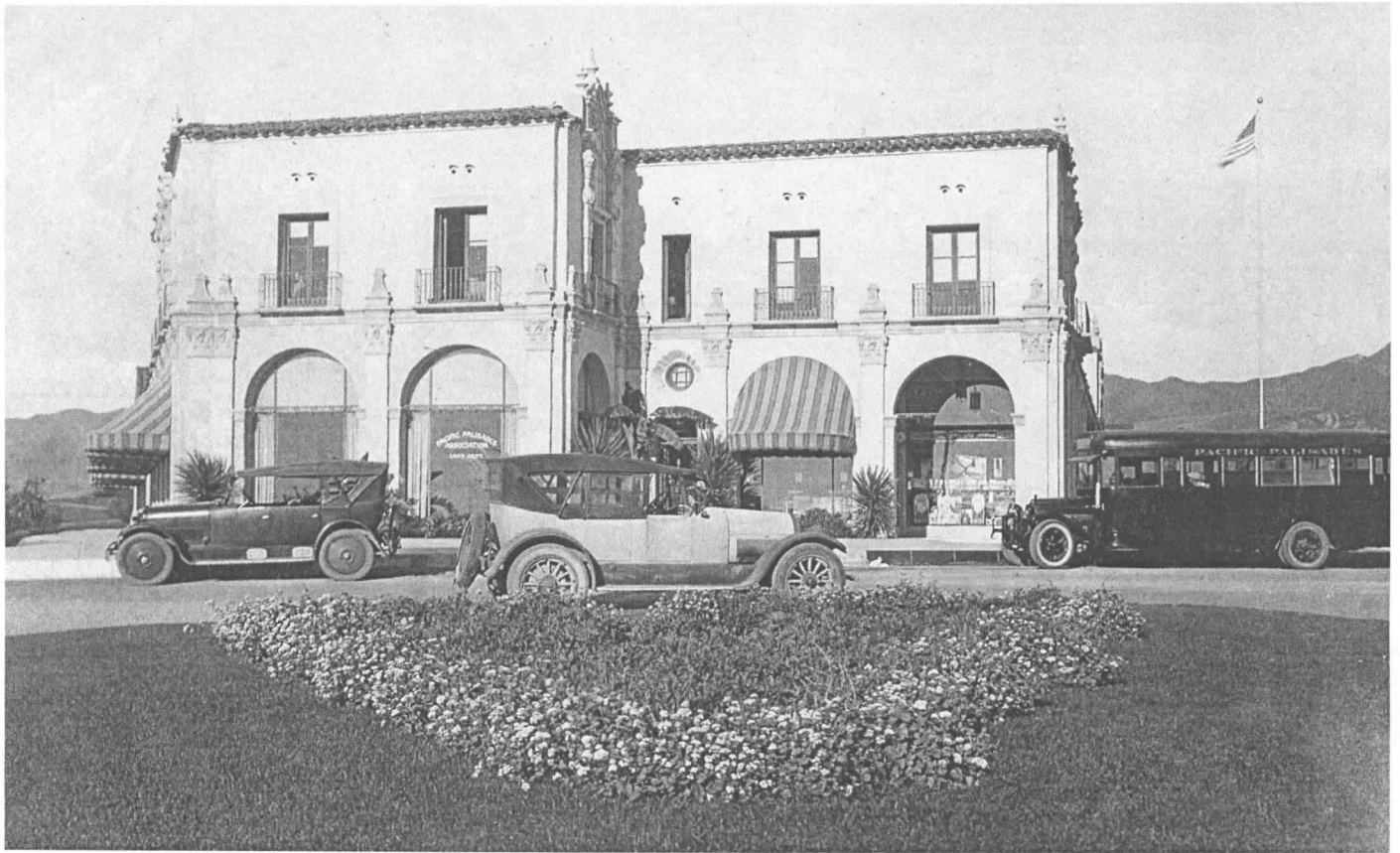


*RANDY COPY*

# Randy Young's Historical Walkabout

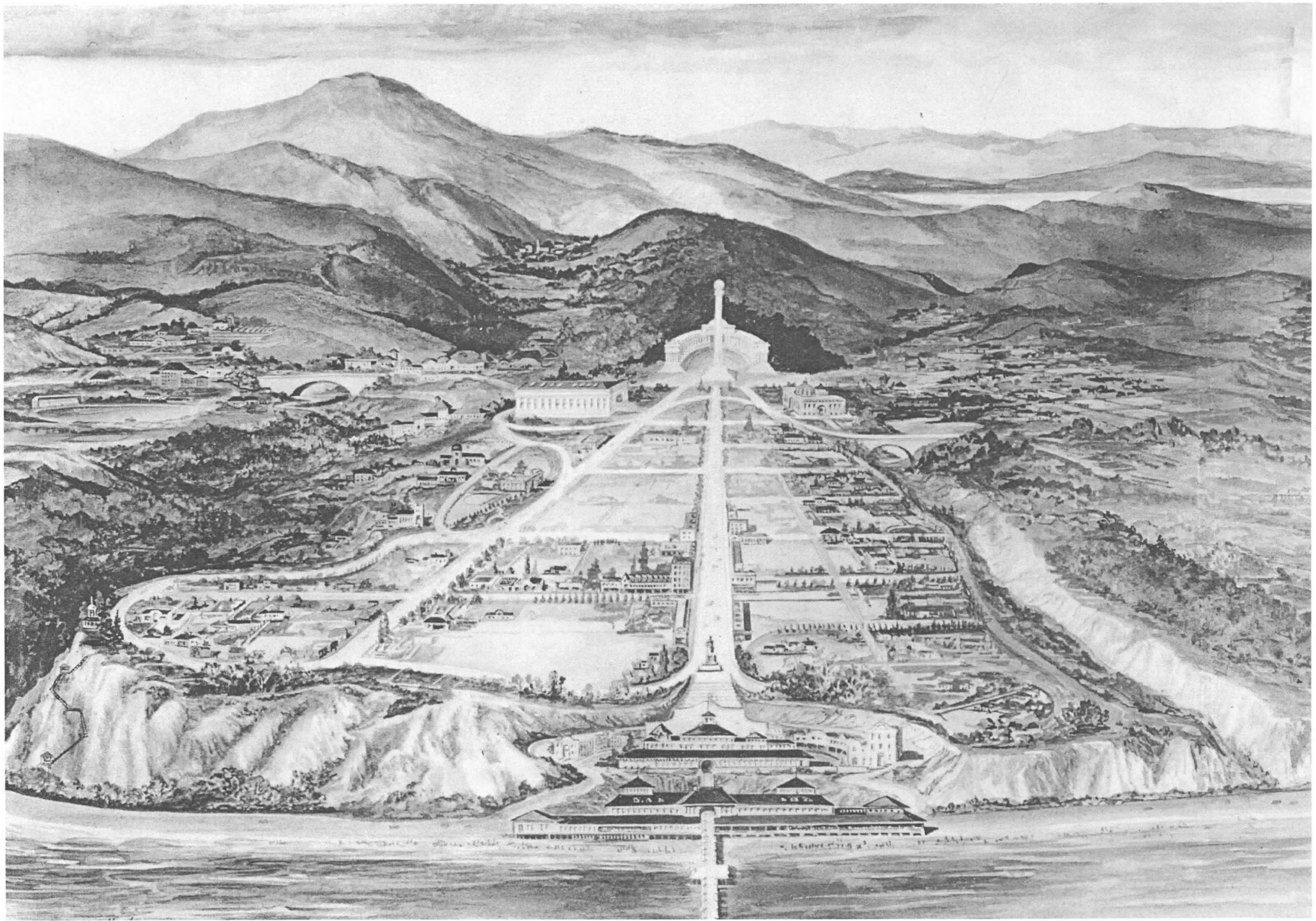


The Pacific Palisades Association Building Circa 1925 from the Village Green.

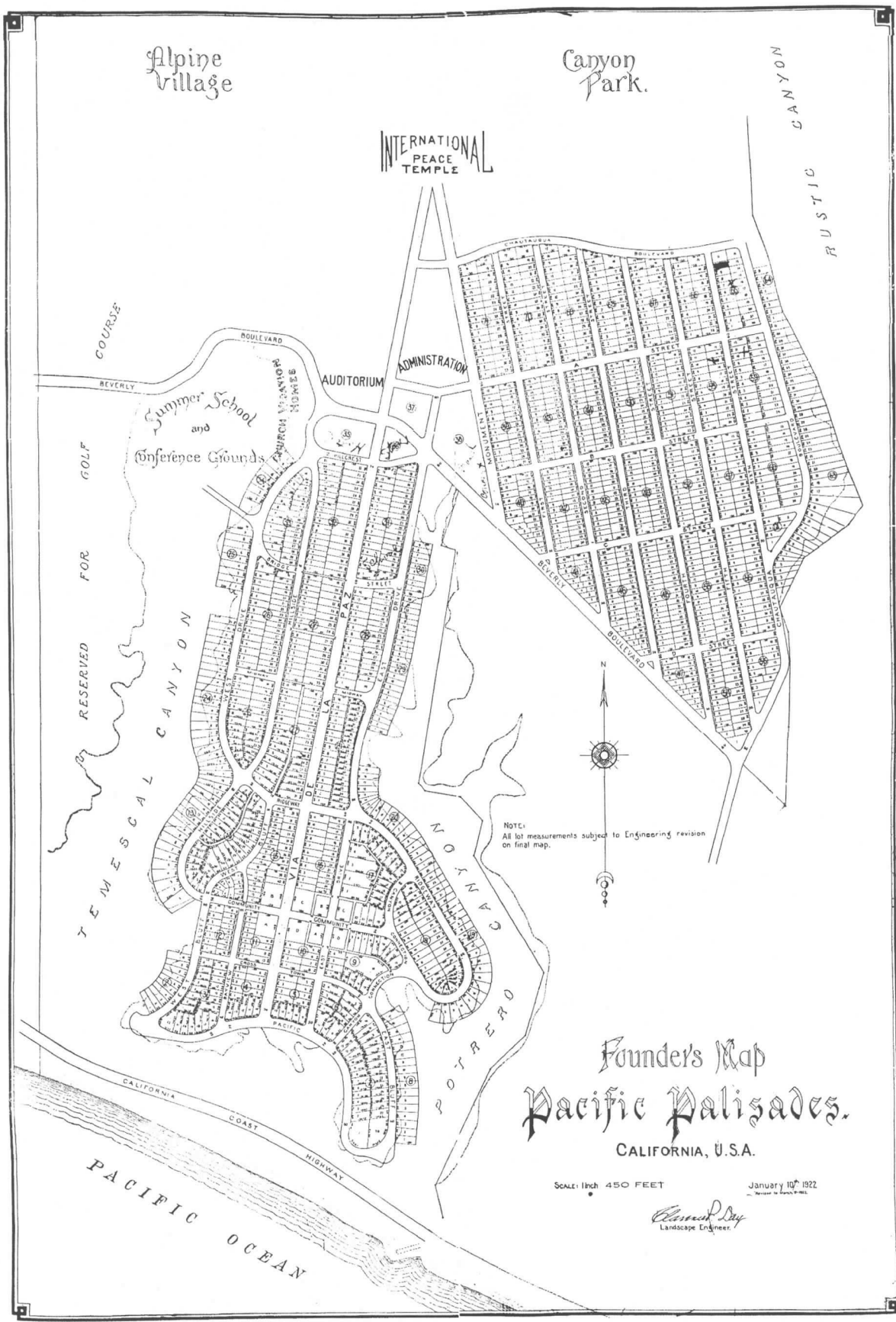
Sponsored by the Pacific Palisades Historical Society  
Co-sponsored by  
Community Planning Initiative for Pacific Palisades

Walk #1  
North Pacific Palisades Business District

August 21, 2013



Original A.E. Mitchell idealized rendering of the proposed development in 1921.



The Founder's Map 1922 by Clarence Day. This was the foundation document for the initial grading for Founders Track 1 and 2..





Olmsted Plan for Downtown Pacific Palisades April 1924.

3





Original Survey and layout of the town 1922.



Aerial Looking North from Palisades Elementary Up Via de la Paz Circa 1954.

Tract Map 1953



6





Address: 15326 W ANTIOCH ST

APN: 4412003004

PIN #: 129B125 615

Tract: TR 9300

Block: 31

Lot: 36

Arb: 1

Zoning: C2-1VL

General Plan: Community Commercial





Address: 15326 W ANTIOCH ST

APN: 4412003004

PIN #: 129B125 615

Tract: TR 9300

Block: 31

Lot #: 3

Arb: 1

Zoning: C2-1VL

General Plan: Community Commercial





Address: 15326 W ANTIOCH ST  
 APN: 4412003004  
 PIN #: 129B125 615

Tract: TR 9300  
 Block: 31  
 Lot: 16  
 Arb: 1

Zoning: C2-1VL  
 General Plan: Community Commercial







Address: 15326 W ANTIOCH ST

APN: 4412003004

PIN #: 129B125 615

Tract: TR 9300

Block: 31

Lot: 36

Arb: 1

Zoning: C2-1VL

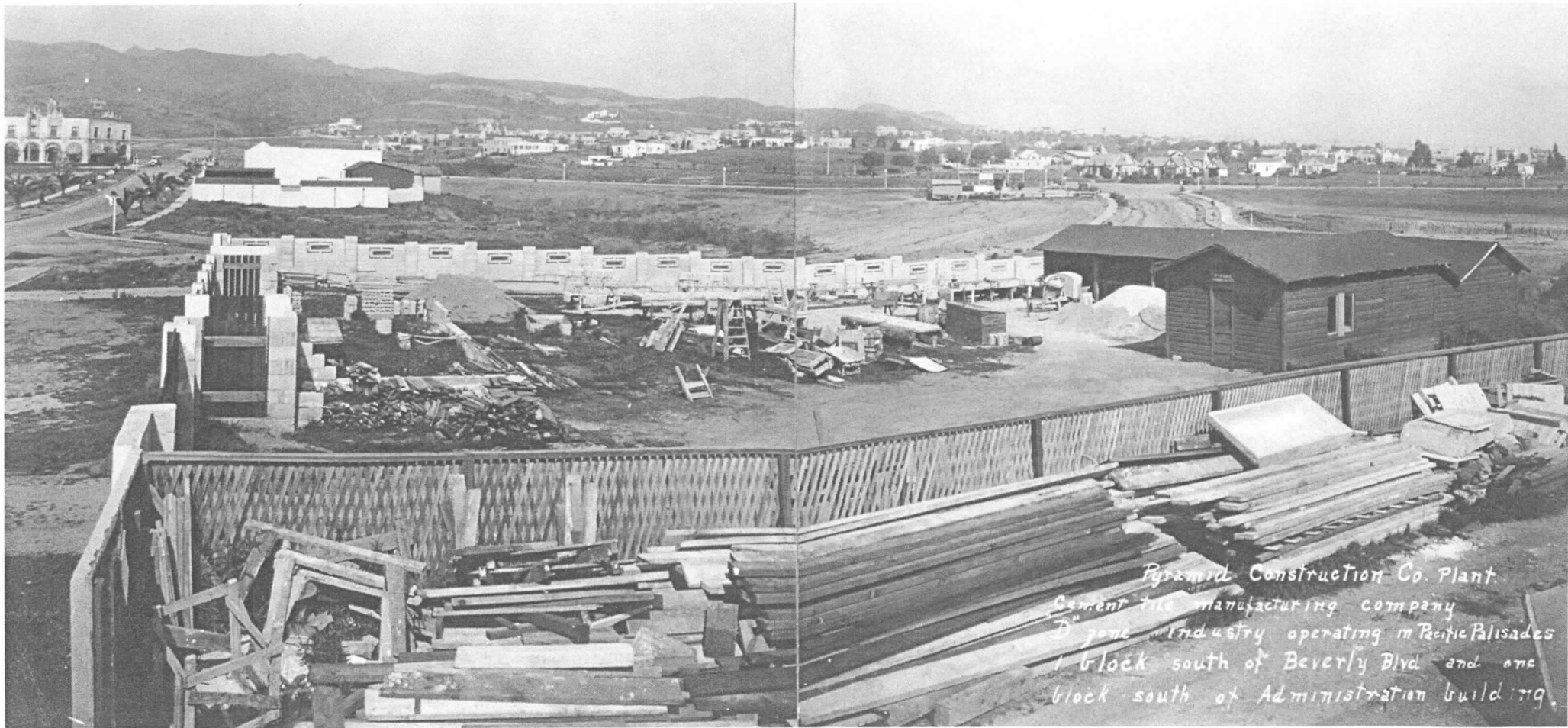
General Plan: Community Commercial





Looking South from Peace Hill (Rimmer) in 1924. The Horse Drawn Fresno Teams are Grading Monument At where Swarthmore Presently Intersects. Town Center (Business Block) is Right Center. Beverly Boulevard later Sunset crosses Upper Center Right to Left.

11



*Pyramid Construction Co. Plant.  
Cement tile manufacturing company  
D zone industry operating in Pacific Palisades  
1 block south of Beverly Blvd and one  
block south of Administration building.*

Early Zoning Battle in the Pacific Palisades Circa 1928. This was a Disputed Concrete Brick Yard (Pyramid Construction) at the present Location of the Verizon Telephone Building Parking Lot.





Jack Sauer Gas Station at La Cruz and Sunset Circa 1932.

13  
M



Business Center Circa 1948.

14



Swarthmore after Completion of East Side April 1954.

15 MR





Swarthmore after Completion of East Side April 1954.



Swarthmore and Monument after Completion of Parking Lot August 1954.

17 MB





Aerial Circa 1940 looking East.

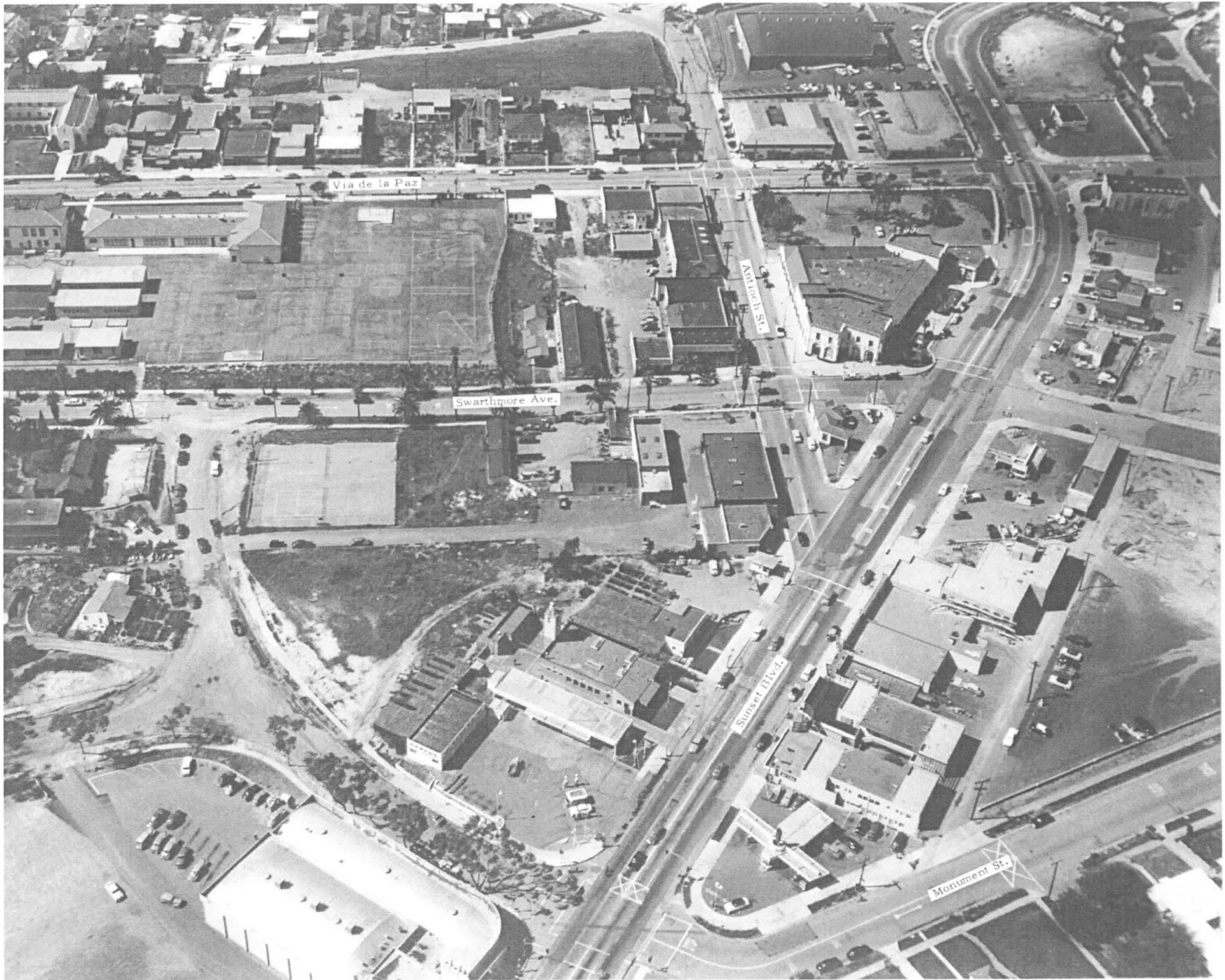
18  
AM





Aerial Circa 1949 looking East.

19  
MST



Aerial Circa 1950 looking East. *WRST*

20

*WRST*





Sunset and LaCruz Circa 1958 showing the Proliferation of signs and no trees.

18  
M





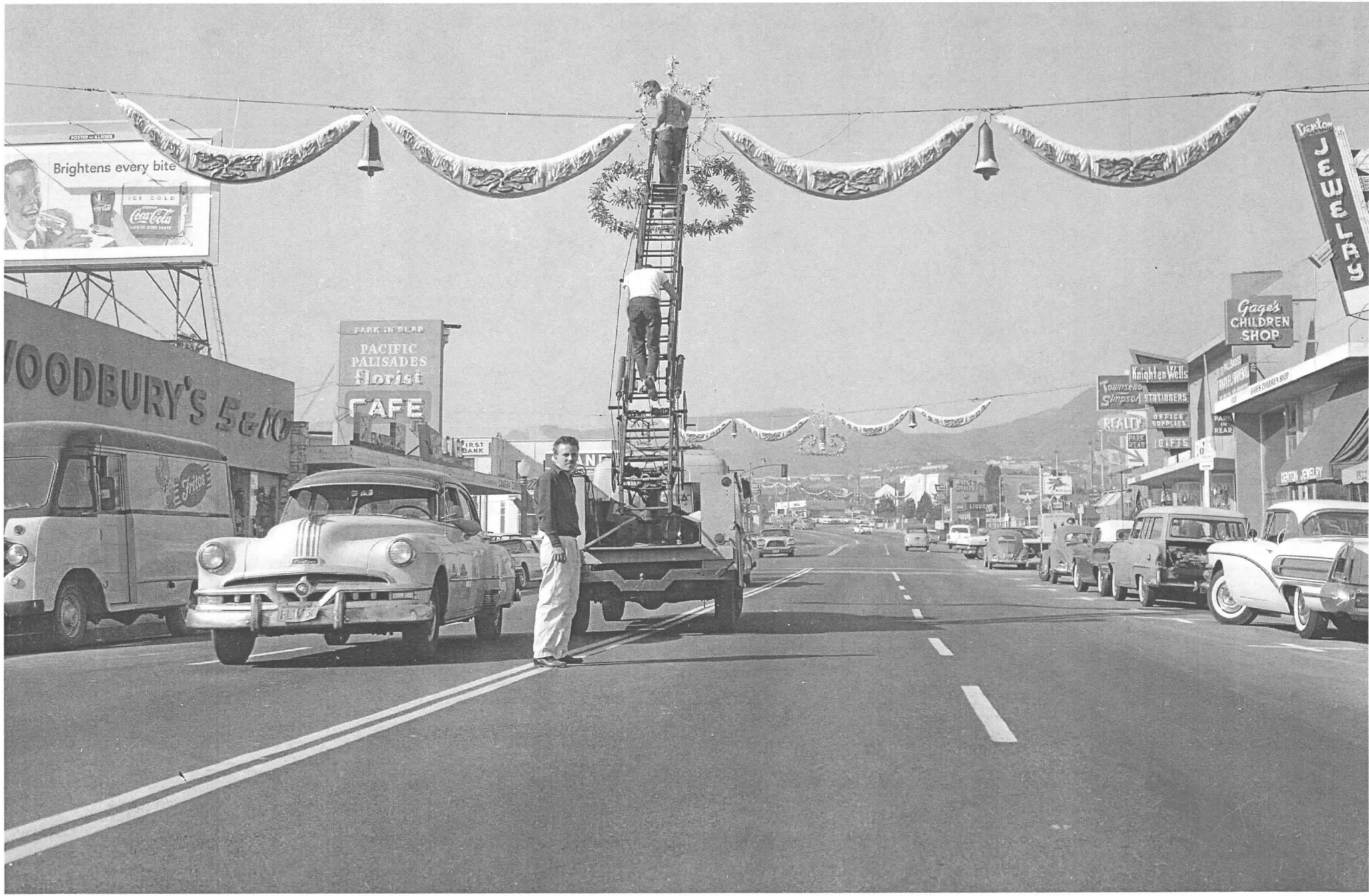
Hot Dog Show Circa 1958



Planting a Tree at Monument and La Cruz 1961.

23  
MAY





Sunset Between La Cruz and Antioch December 1958.

24  
1958





Antioch and Sunset Circa 1950.

25  
WA



Gene's Retaurant (later Art Poole's) in 1961. Note the Alley to the Right Now a Pocket Park.

26  
AP



Business Block Circa 1928

27  
M.H.





The Building of the Entrance to North Swarthmore Circa 1935

SC  
MHT

24/15

29



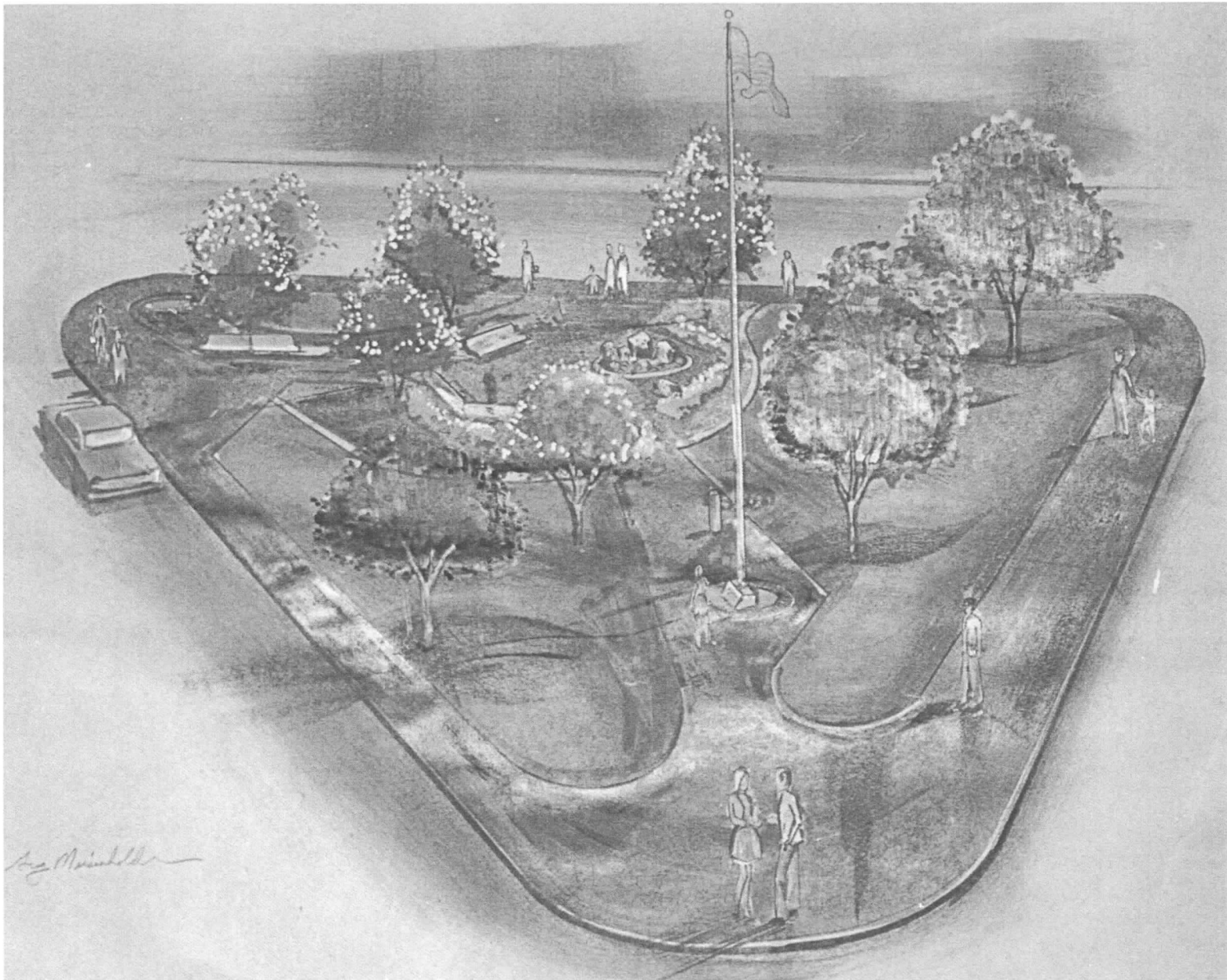
This picture of the Business Block was taken around 1950 when Jurgensen's had just moved in.



Village Green site Circa 1950

30  
H





Rendering for Village Green Project Circa 1972

31



The Village Green just after Completion in 1974

PHH

33



The photo at the top was taken Circa 1953 at 15317 Sunset. The Structure was replaced in 1960 with a more modern style of architecture. The structure next door still retains the New England style of architecture that will in turn be removed for a modern style building.







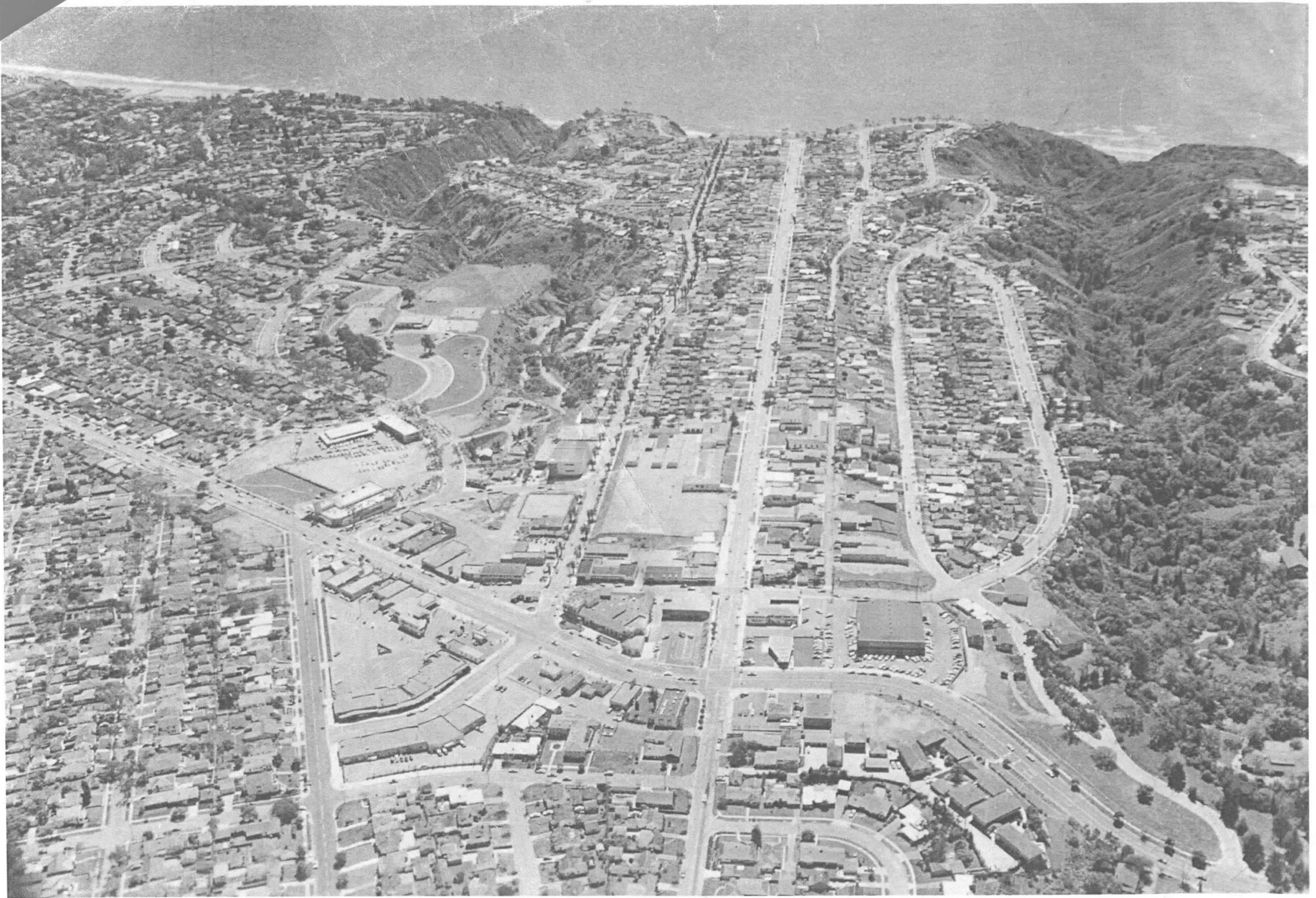
DWP Building at Via de la Paz and Sunset Circa 1950

34  
BWP



The Lutheran Church in the Early 1960s. The parking lot and the church was at one time zoned for parking but an apartment building was put up instead.

35



Aerial in 1955 looking South.