

RANDY
COPY

Randy Young's Historical Walkabout



Via de la Paz Business district taken in ~~1958~~ when school had just let out.

SEPT '54

Sponsored by the Pacific Palisades Historical Society
Co-sponsored by
Community Planning Initiative for Pacific Palisades

Walk #2
South Pacific Palisades Business District

August 28, 2013



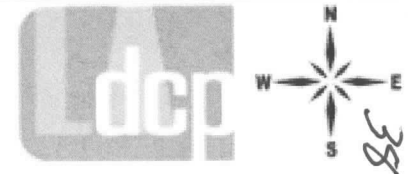
An Aerial of Pacific Palisades Circa 1947



Address: 984 N MONUMENT ST
 APN: 4423017024
 PIN #: 129B129 782

Tract: TR 9300
 Block: 40
 Lot: 13
 Arb: None

Zoning: C1-1VL
 General Plan: Community Commercial





The Palisadian Newspaper Headquarters Circa 1949 now the Loading Dock at CVS.



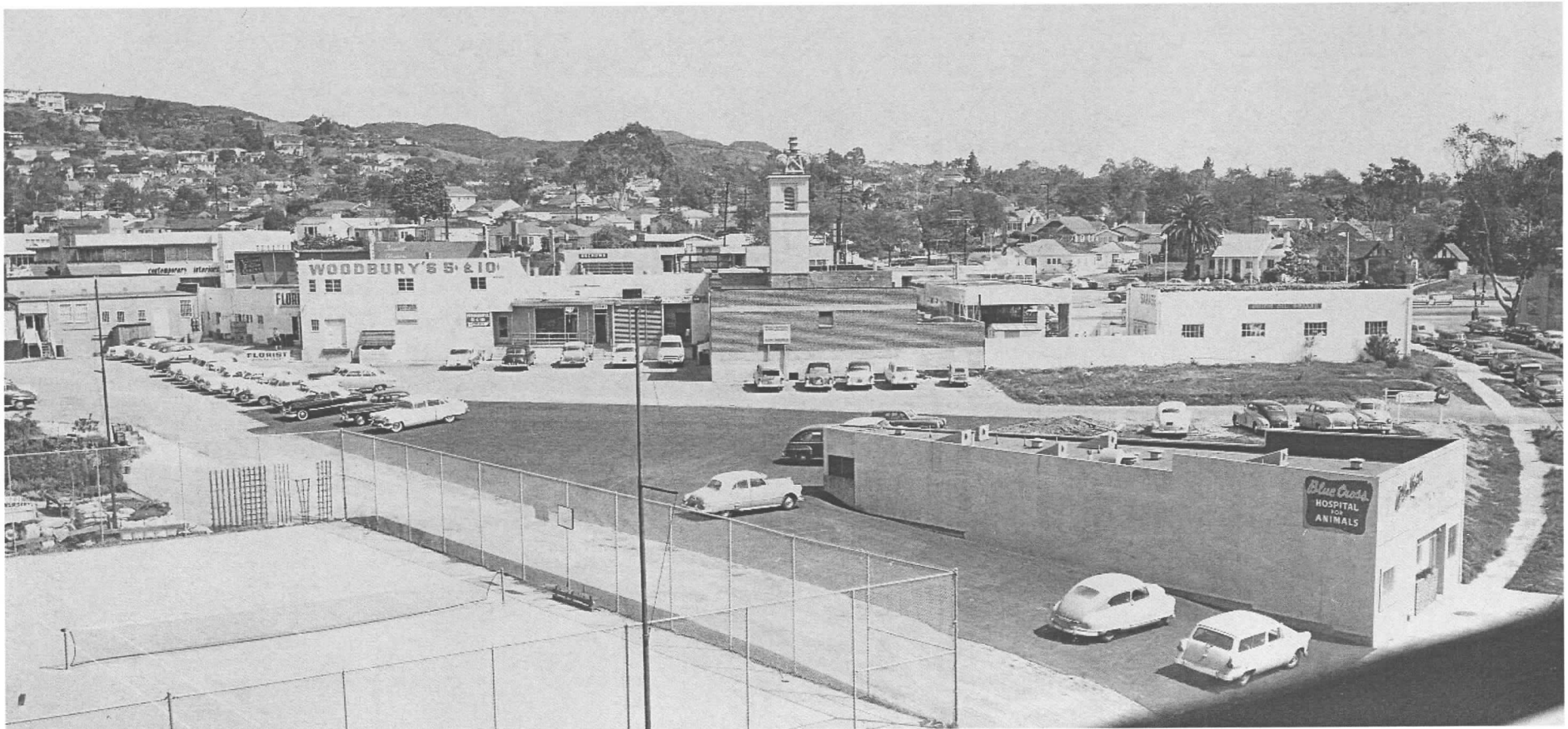
At 863 Swarthmore in 1949.



La Cruz and Swarthmore Circa 1953.

NO 87612

41



La Cruz from the Telephone Building in 1956. The Tennis Court is where the American Legion and CVS Parking is now situated. Blue Cross Animal clinic is still there.

NOTE 12



Parking Lot Looking Toward La Cruz and Swarthmore 1956



Post Office on La Cruz 1959.

44



La Cruz at Alma Real Circa 1960.



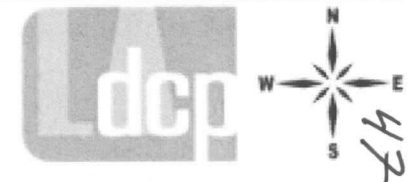
Parking lot from La Cruz 1959.⁷



Address: 984 N MONUMENT ST
 APN: 4423017024
 PIN #: 129B129 782

Tract: TR 9300
 Block: 40
 Lot: 13
 Arb: None

Zoning: C1-1VL
 General Plan: Community Commercial





Groundbreaking for Hughes Market January 1956.

*MR. HUGHES IS WITH THE ROUND
UP PLANS*

*LELAND
FOOD
with
speech*

48



Sunset and Carey Circa 1961

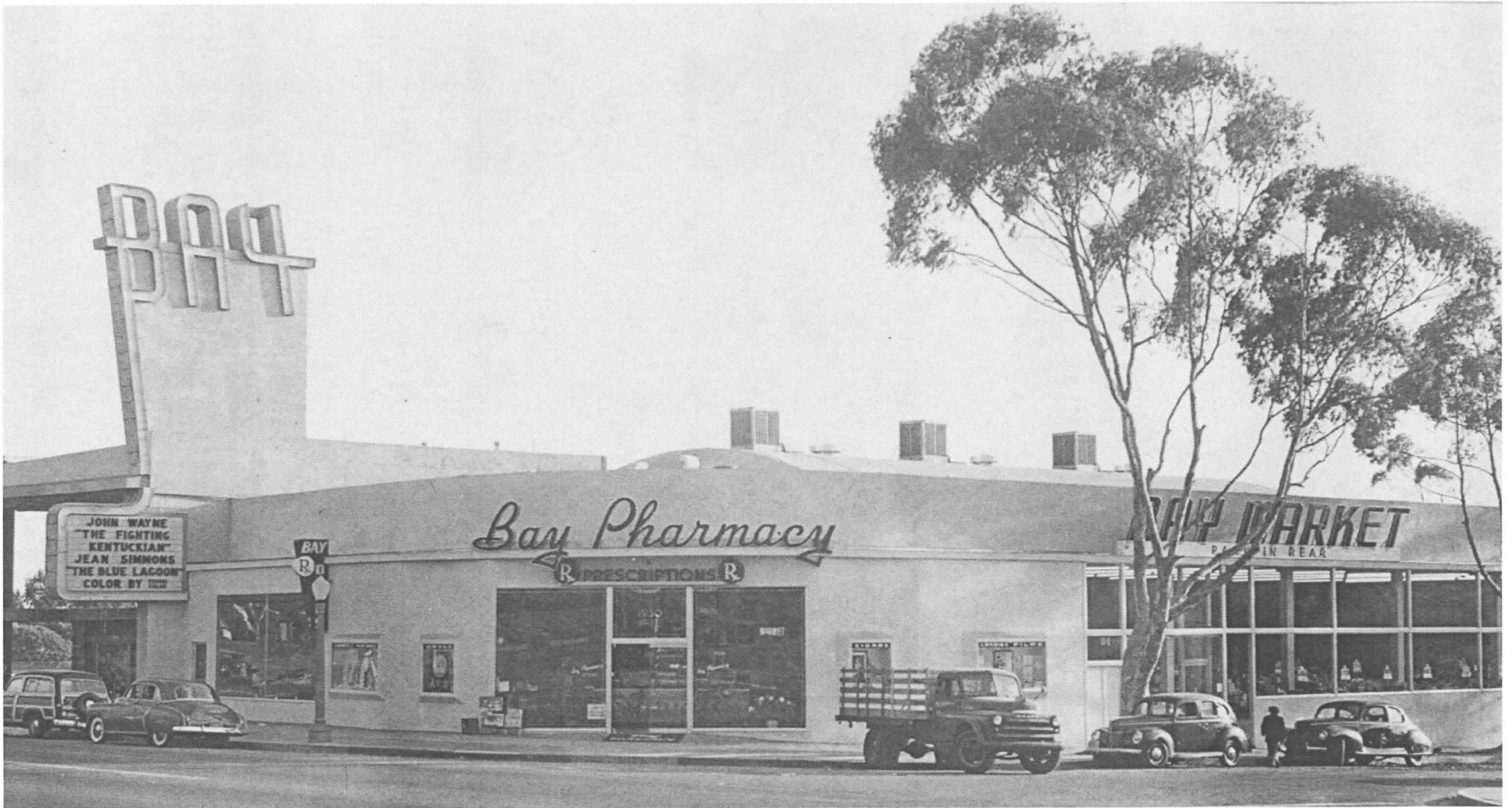


Address: 984 N MONUMENT ST
 APN #: 4423017024
 PIN #: 129B129 782

Tract: TR 9300
 Block: 40
 Lot: 13
 Arb: None

Zoning: C1-1VL
 General Plan: Community Commercial





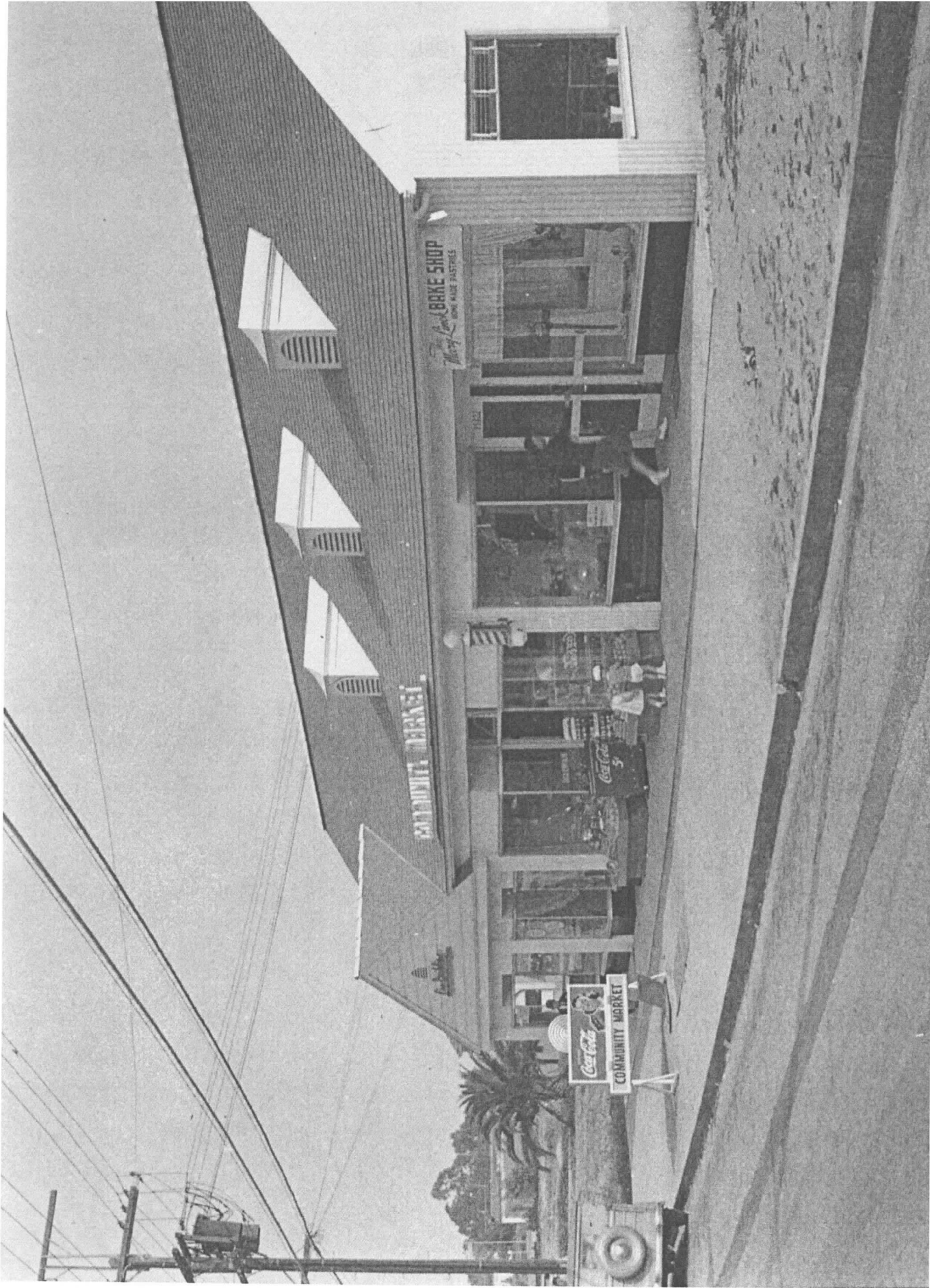
Bay Theatre and Pharmacy in 1949 at Sunset and La Cruz..



The Lee Building at Antioch and Swarthmore Circa 1949.

POWELL 4/1/49

54



The Lee Building on Antioch Circa 1940

55
~~101~~



Antioch and Via de La Paz Circa 1949.

PARK

~~56~~
56



Corner of Via de la Paz and Antioch Circa 1947.

57



Parking lot and Final Grading for the Medical Building Circa 1958.



The Clearing of the Trees in the Park Next to the Business Block Circa 1958.

MERCHANTS
OF
CORCORAN
TRIA
ASSASSINS

~~59~~
59



Medical Building at Antioch and Via de la Paz in 1958.

188
09



Spotlight Camera at Antioch and Via de la Paz Circa 1950.



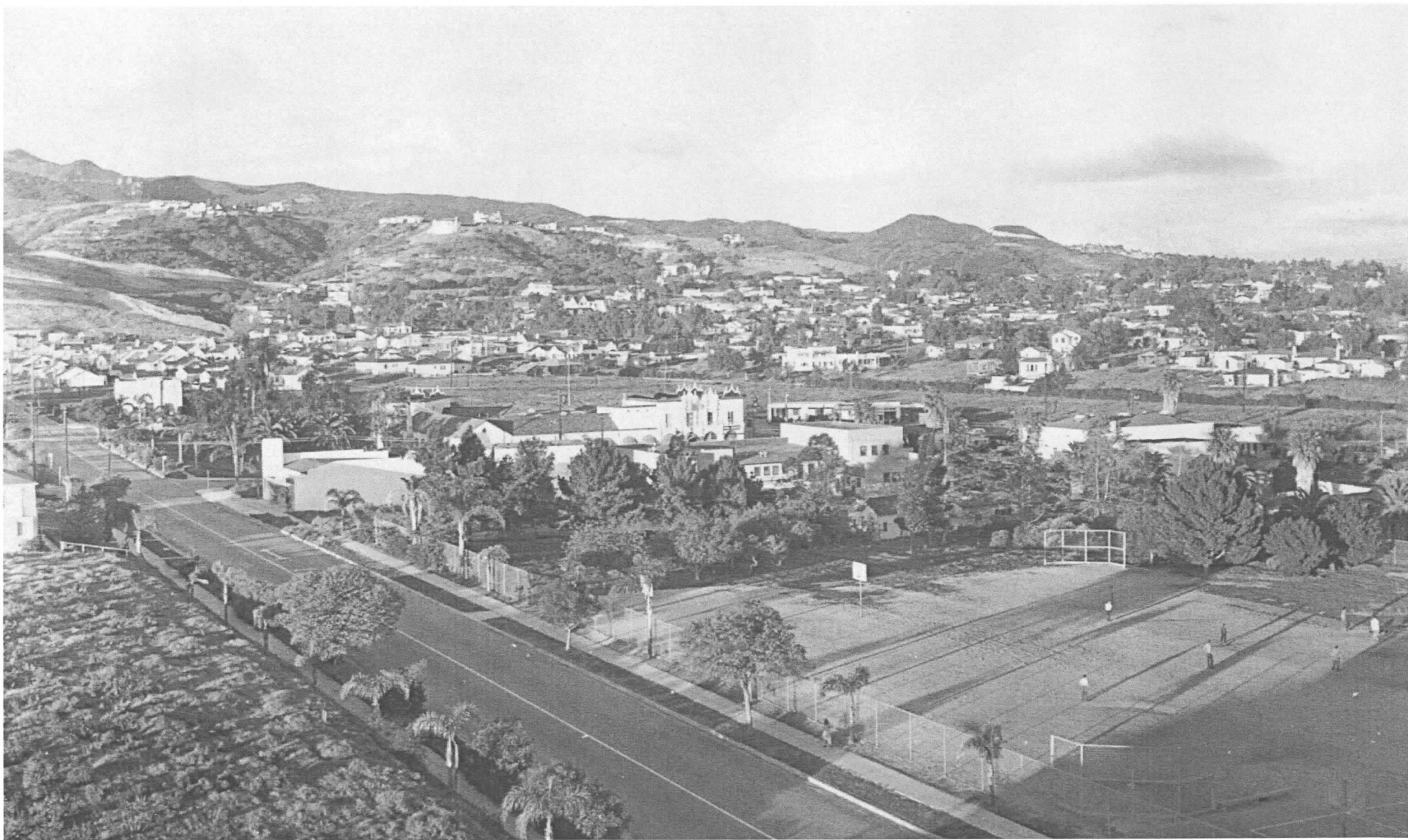
S. J. Wilson Building at Antioch and Via de la Paz Circa 1949. Site is Now the Parking Lot for Gelsons.



Parking Next to the S.J. Wilson Building on Via de la Paz in 1955.

FIRST GARAGE

~~62~~ 63



Pacific Palisades Post on Via de la Paz Circa 1946.

NOIR TRAILS

64



Via de la Paz From Church Bell Tower Circa 1950..

TORRANCE
ASSASSIN'S

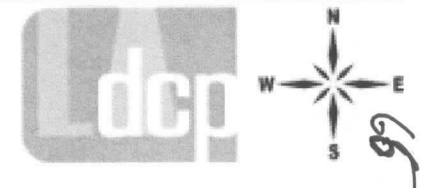
~~65~~
65



Address: 984 N MONUMENT ST
 APN: 4423017024
 PIN #: 129B129 782

Tract: TR 9300
 Block: 40
 Lot: 13
 Arb: None

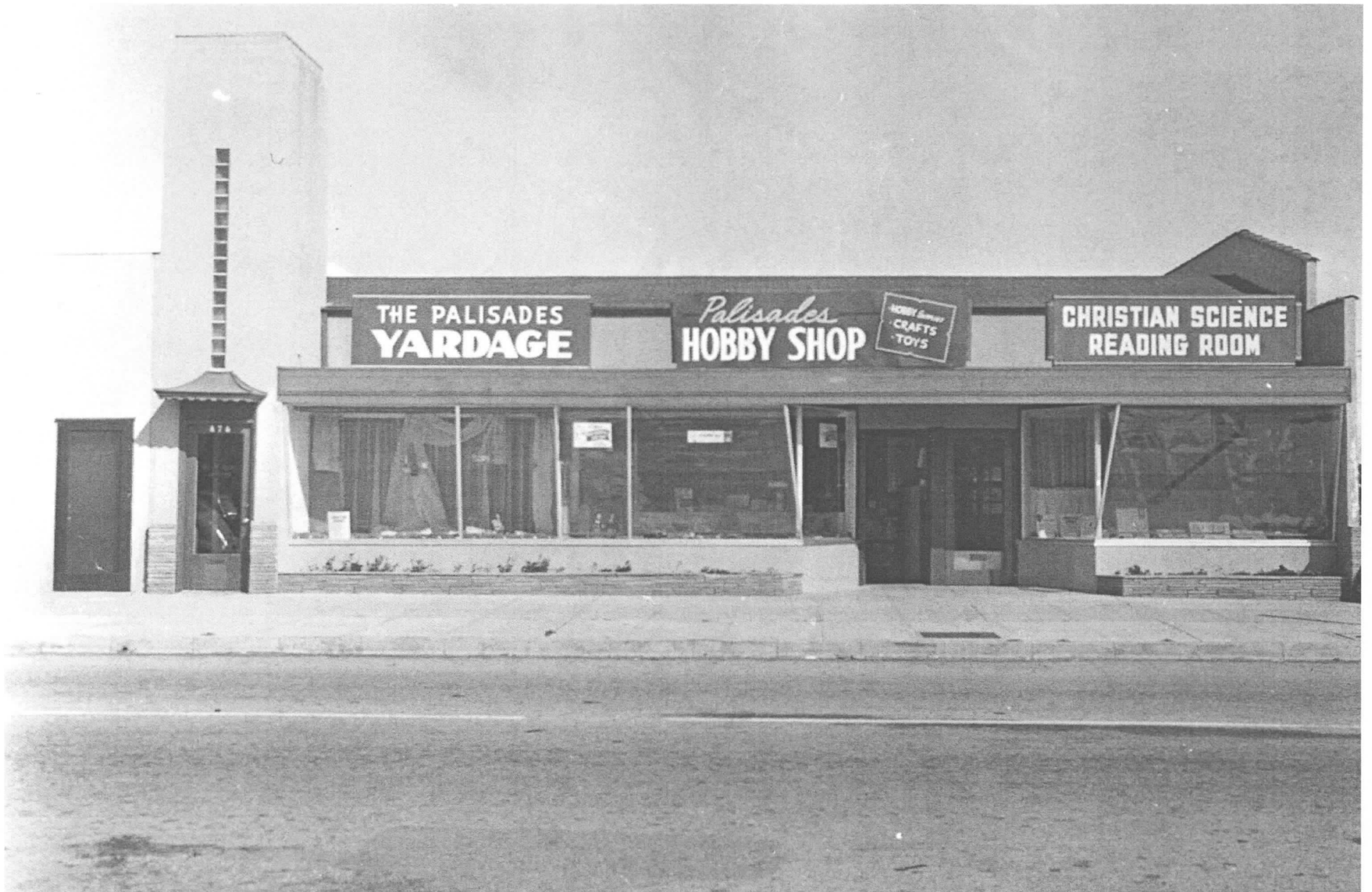
Zoning: C1-1VL
 General Plan: Community Commercial





The Ross Building at 875 Via de la Paz Circa 1949.

67



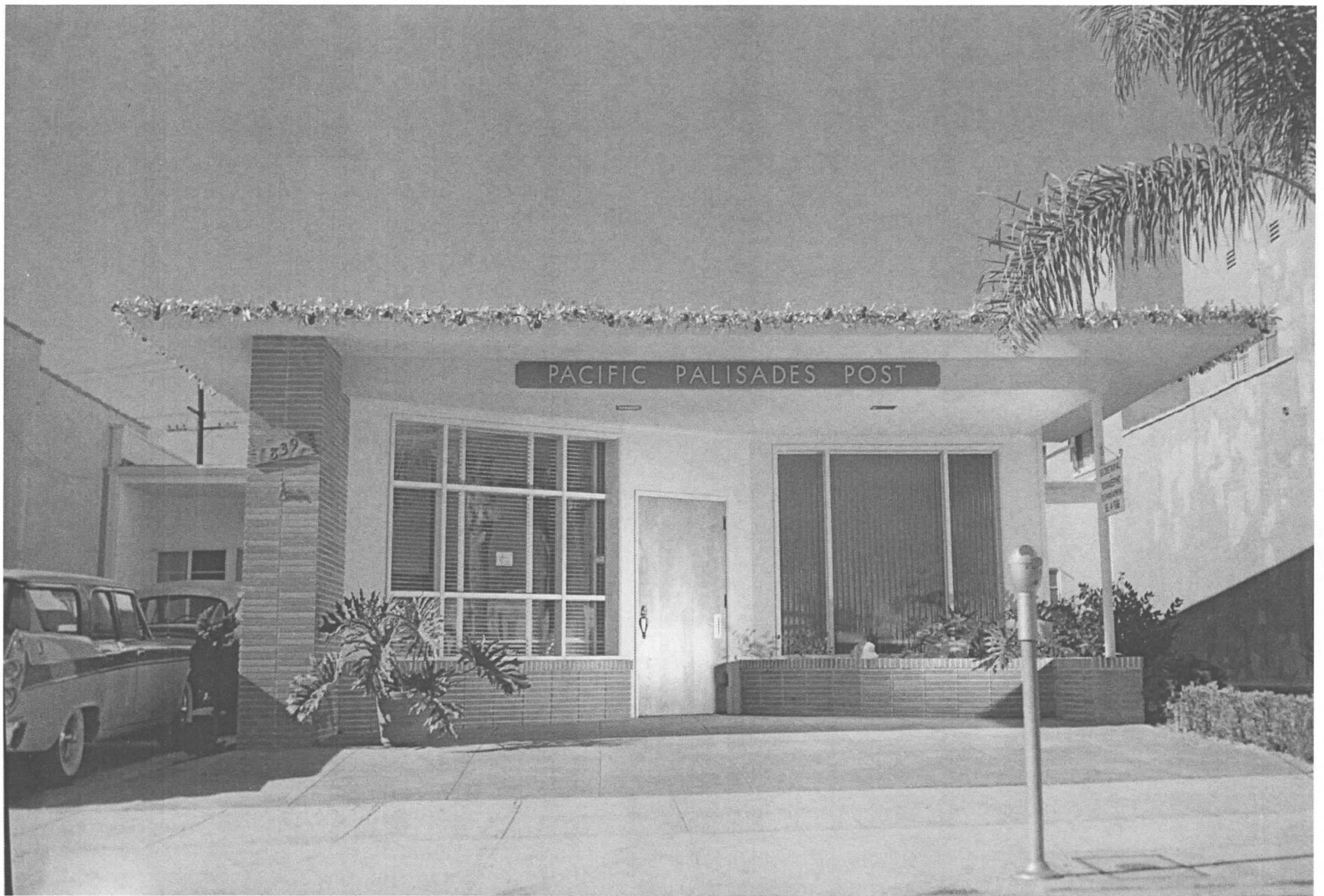
Hobby Shop et al on Via de la Paz Circa 1940.



Tacaloma Swimming pool and Gym on Via de la Paz in 1955.



Tacaloma Swimming pool on Via de la Paz in 1954



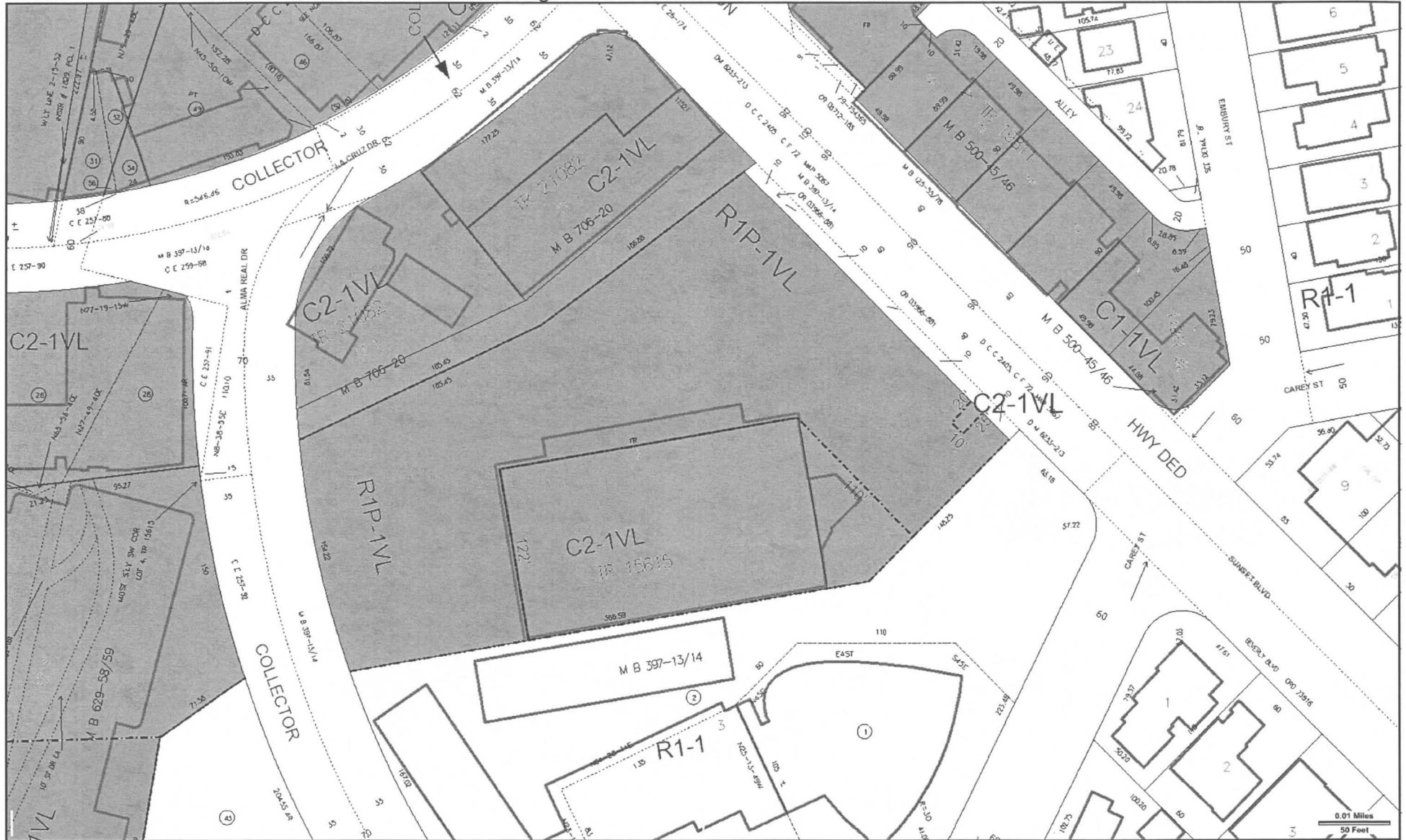
Pacific Palisades Post on Via de la Paz in 1959.

20



Hughes Market 1957.

49



Address: 984 N MONUMENT ST
 APN: 4423017024
 PIN #: 129B129 782

Tract: TR 9300
 Block: 40
 Lot: 13
 Arb: None

Zoning: C1-1VL
 General Plan: Community Commercial





Swarthmore and Bowdoin where the Village School is located Circa 1949.