

Randy Young's Historical Walkabout

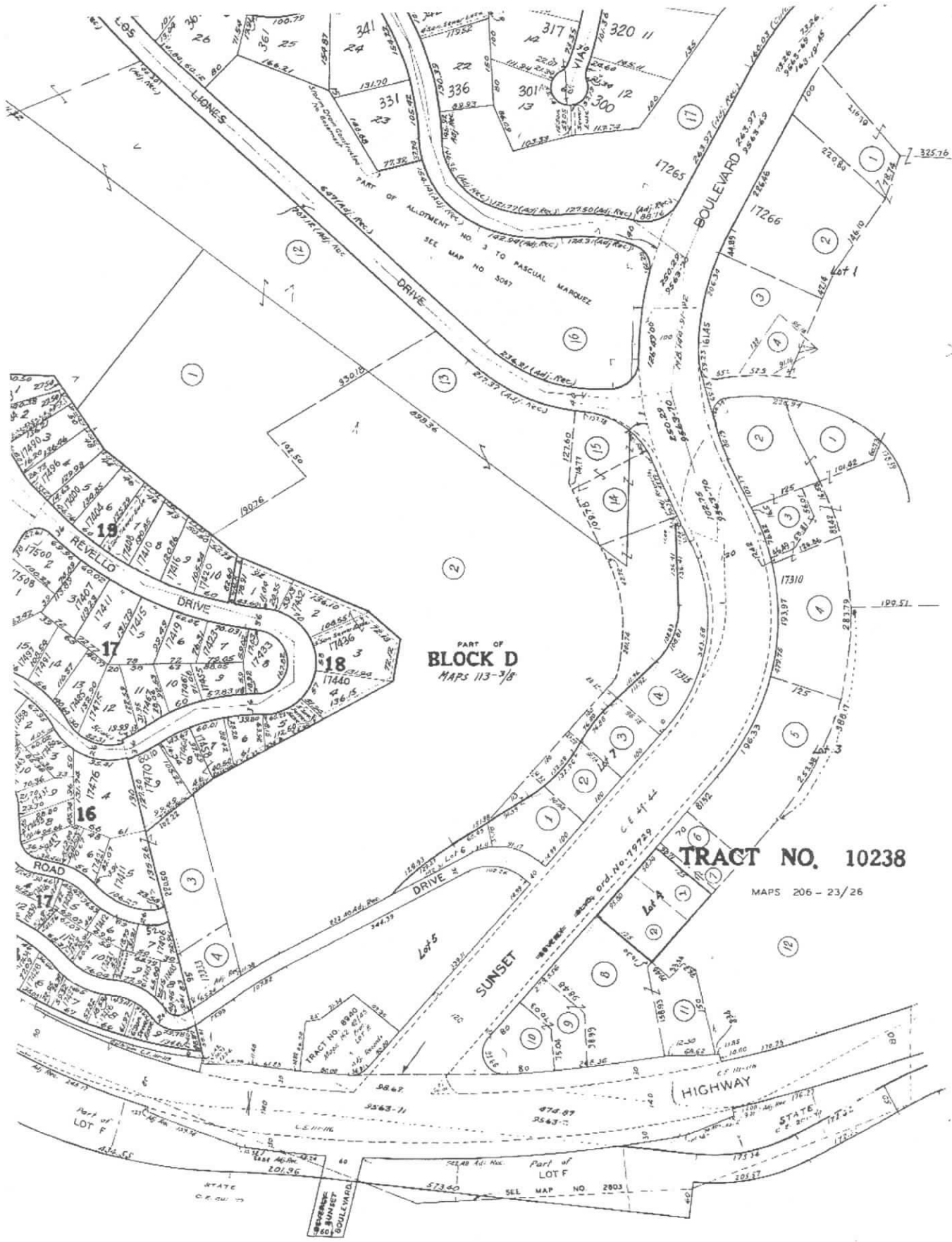


Aerial of Santa Ynez Canyon at PCH and Sunset Circa 1950

Sponsored by the Pacific Palisades Historical Society
Co-sponsored by
Community Planning Initiative for Pacific Palisades

Walk #3
Pacific Coast Highway and Sunset Blvd.

September 3, 2013



ADJOINING MAP PAGE 75

1953 Tract Map for Sunset PCH

09/02/2013

Generalized Zoning

ZIMAS PUBLIC



0.04 Miles
200 Feet



Address: 16710 W BOLLINGER DR
 APN: 4415006011
 PIN #: 129B121 723

Tract: TR 5613
 Block: None
 Lot: 30
 Arb: None

Zoning: R1P-1
 General Plan: Low Residential



Sunset and PCH intersection Circa 1918 when the Ince Studio was in full Production.



Hydrolic Grading for Sunset Boulevard Circa 1925. Present site of the SRF Shrine.



Paseo Miramar and Sunset Looking Toward the Ocean. The Riviera Riders, Headed by Marco Hellman, Rode to the New Subdivision circa 1928.



Santa Ynez and Los Liones Circa 1928. Note to the Center left is the Area that Edgewater Tower now Resides.
The Area has been Highly Modified by the Hydrolic Grading From Alphonzo Bell.

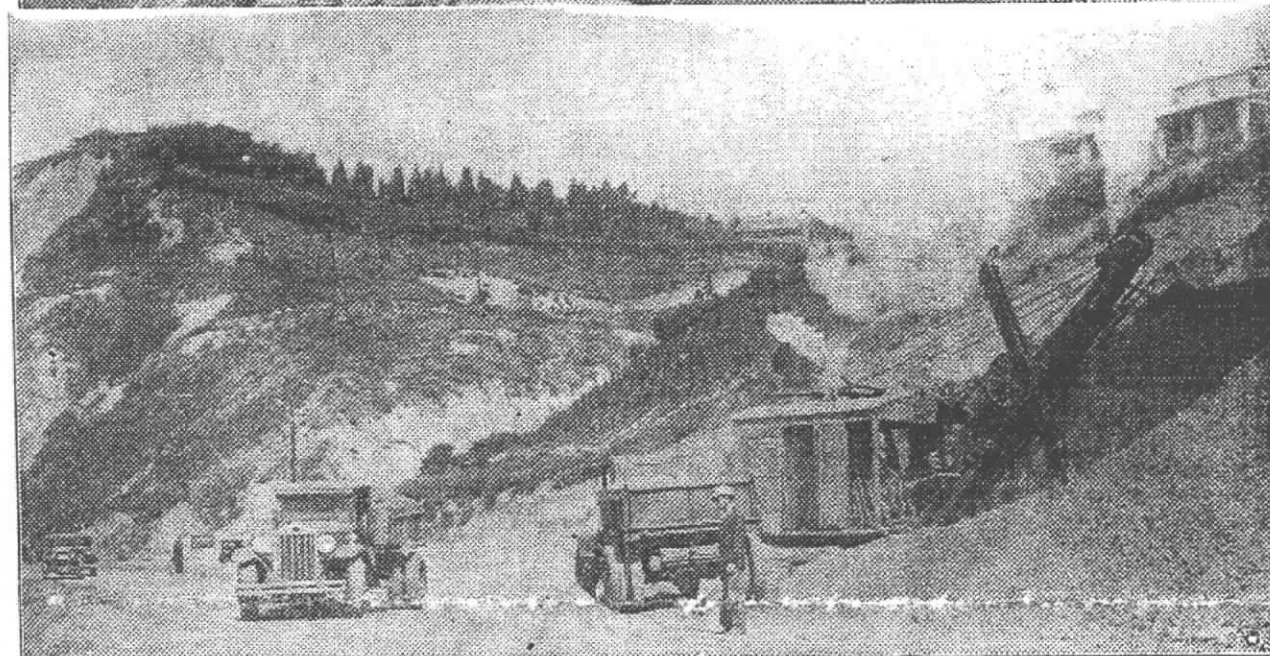
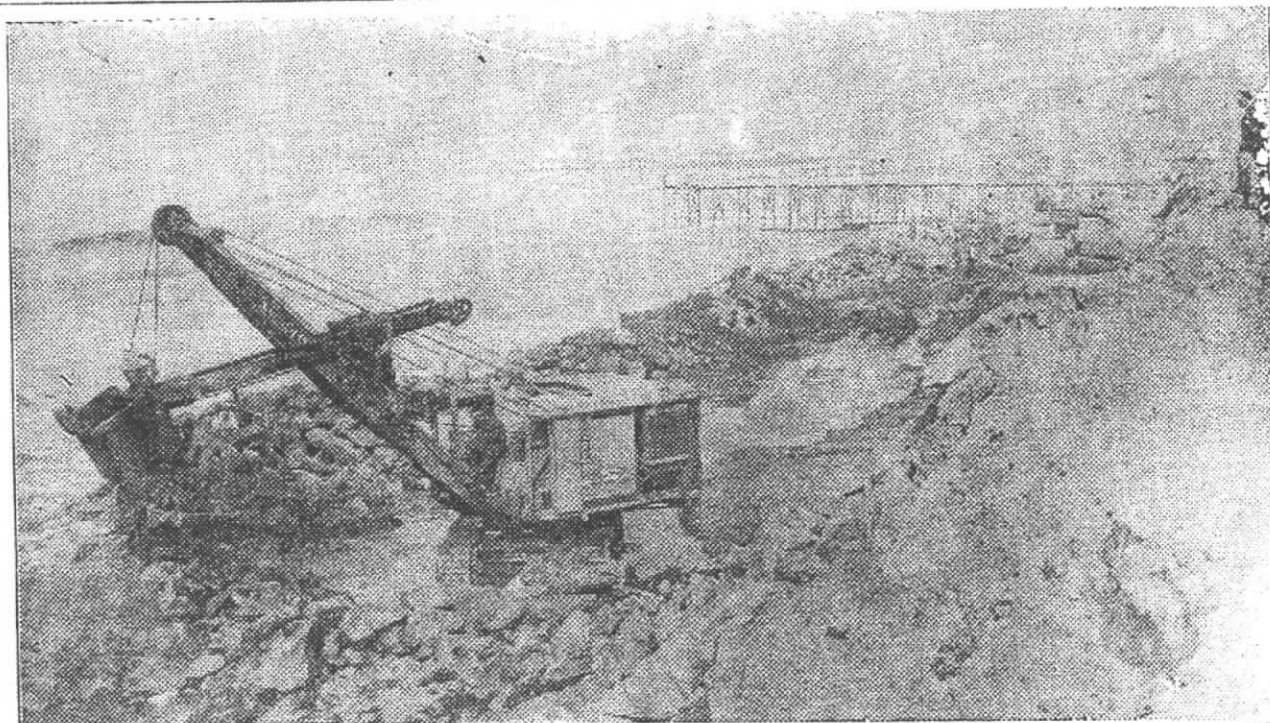


E-4031
Photographed JAN. 3, 1931, App. 1:30 P.M.
TIME AT 1:30 P.M.

1931 Aerial Looking Northwest Toward Santa Ynez Canyon..



Work Under Way on Widening Coast Highway Here



These views are of activities on the Roosevelt Coast Highway at Pacific Palisades where for a distance of 2.43 miles construction crews are now engaged in widening the asphaltic concrete to 40 feet and the graded road to 76 feet.

In 1932 the State Highway Department Cut the Toe of the Slope Along PCH.



Landslide Circa 1943. The Bel-Aire Bay Club Beach Club is the the left.

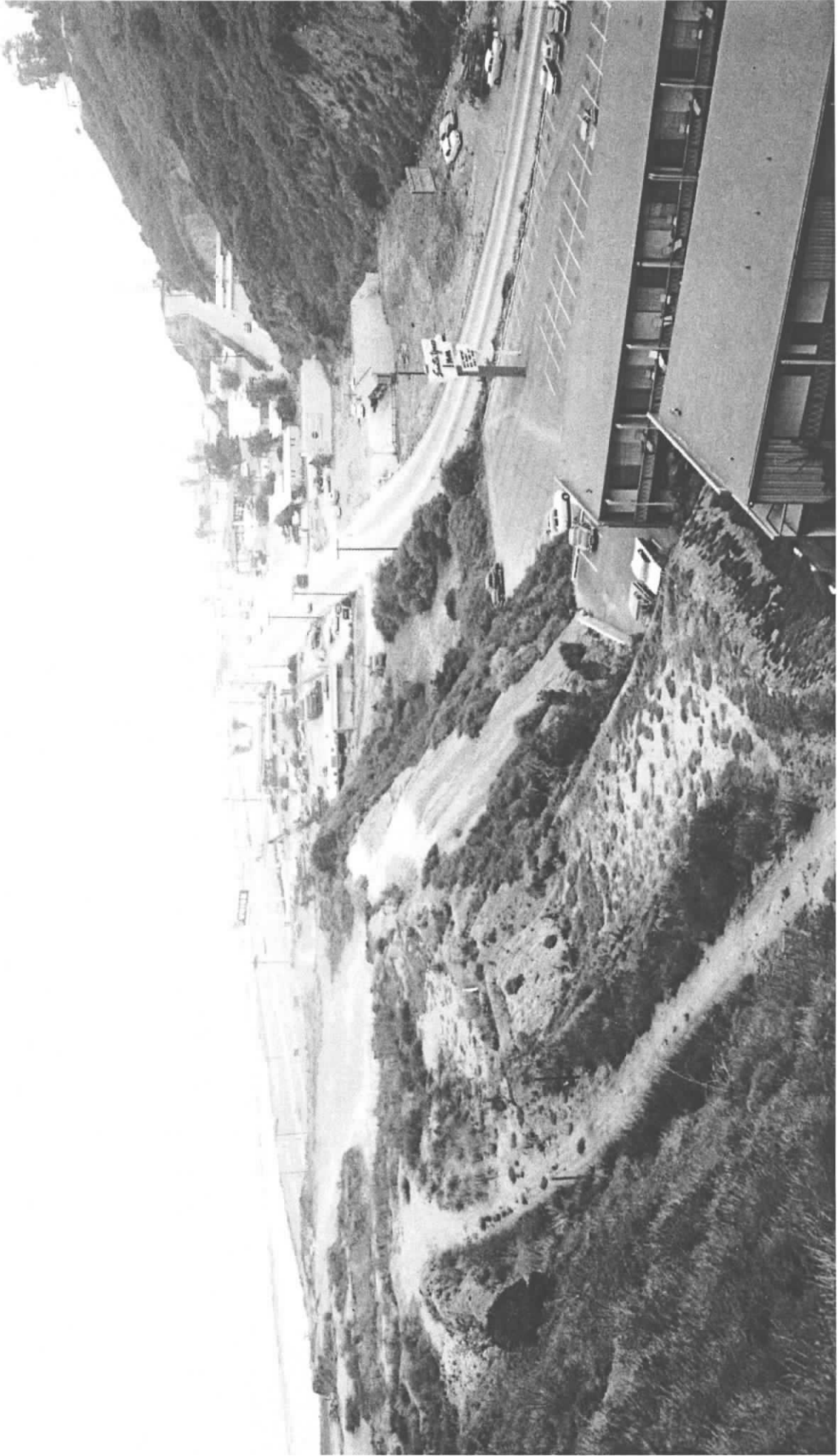
81



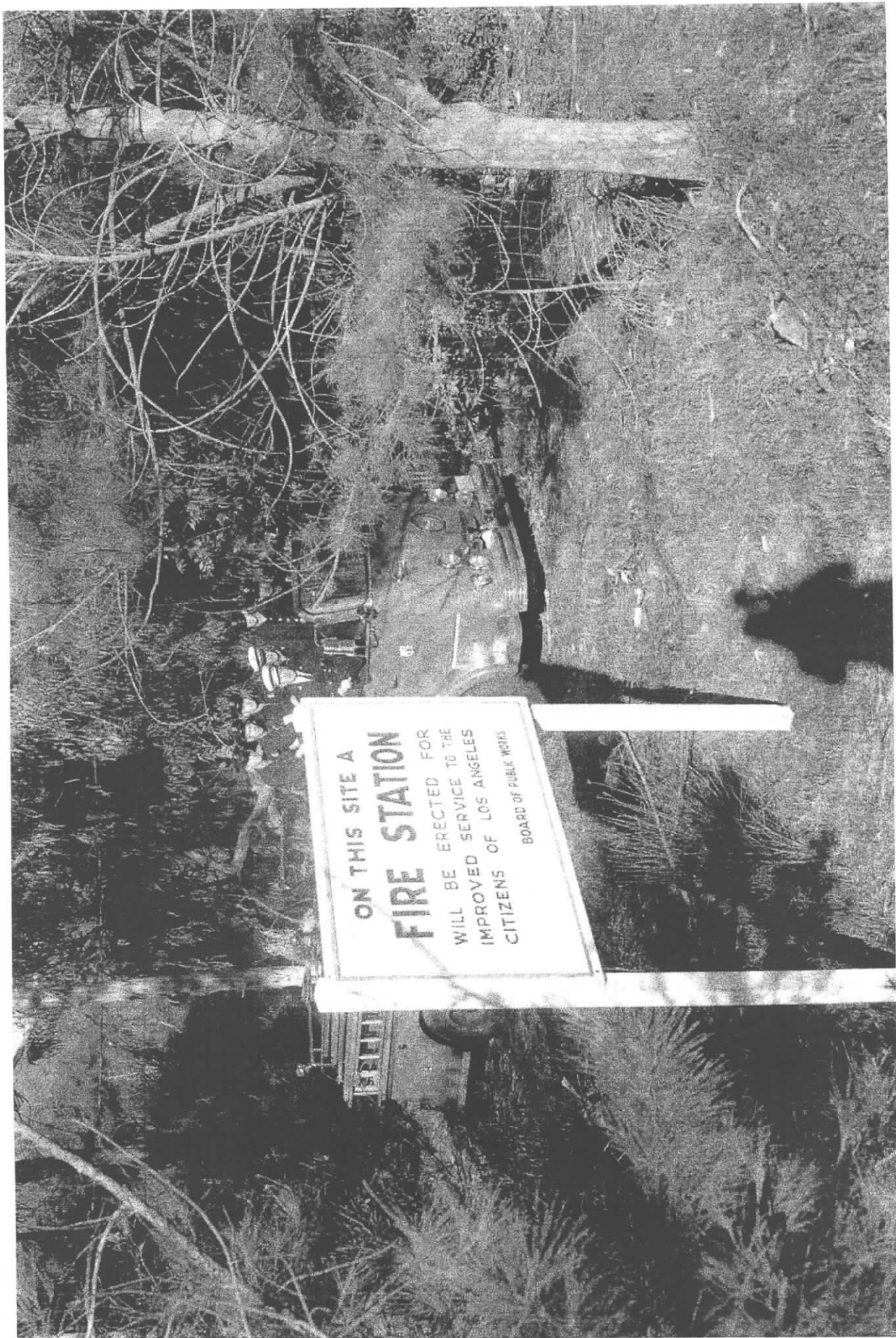
Aerial Photo of Lower Santa Ynez Canyon Circa 1948.



Aerial in 1953 showing the Mouth of Santa Ynez Canyon at the Lower Right.



In 1961 the grading for Edgewater Towers begins to the left..



The Fire Station 23 Publicity Phot in 1961.