

Randy Young's Historical Walkabout



Doc Law's Drug Store and Cafe Circa 1925.

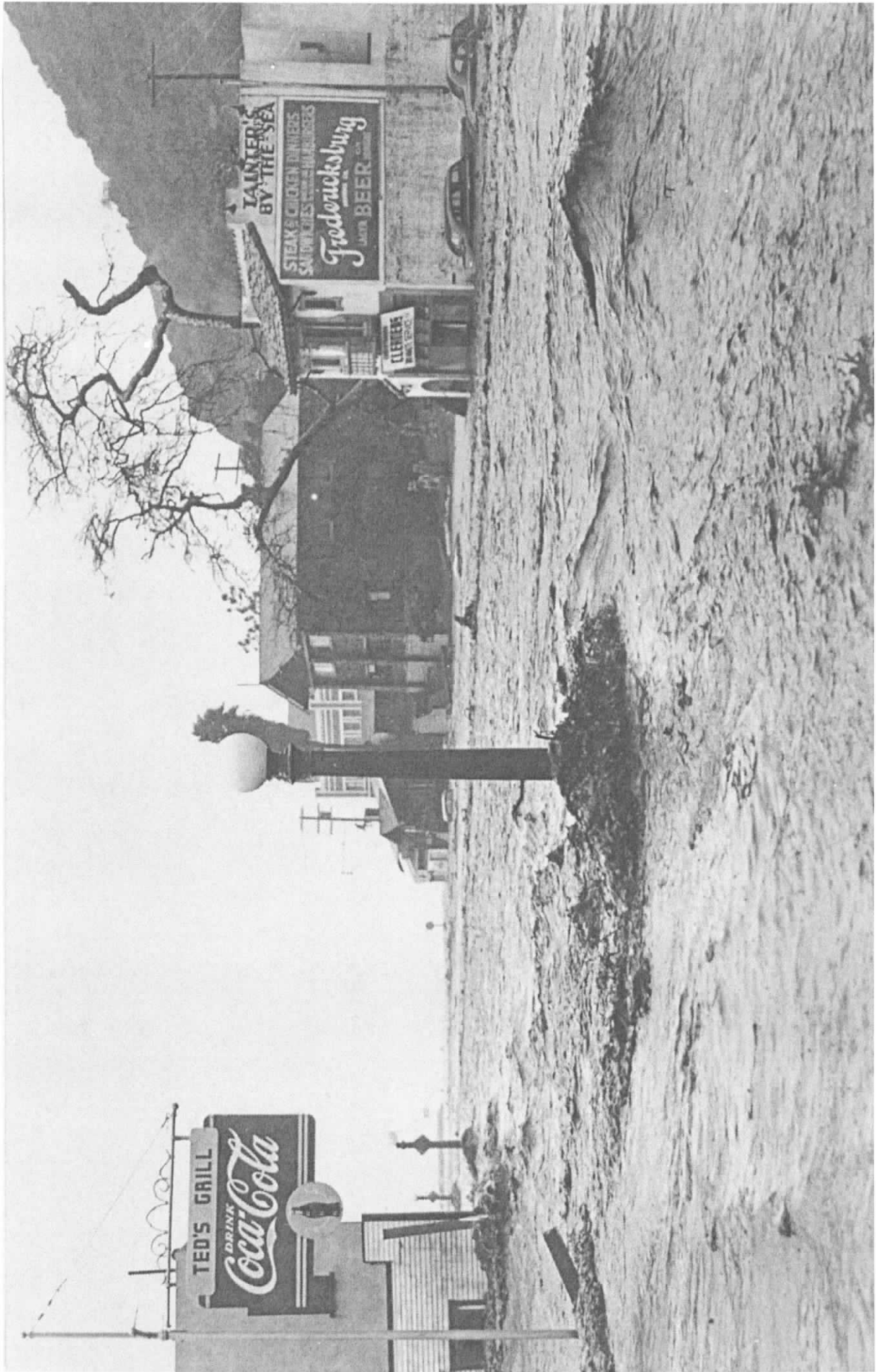
Sponsored by the Pacific Palisades Historical Society
Co-sponsored by
Community Planning Initiative for Pacific Palisades

Walk #4
Santa Monica Canyon Business District
(Entrada, Channel, Chautauqua)

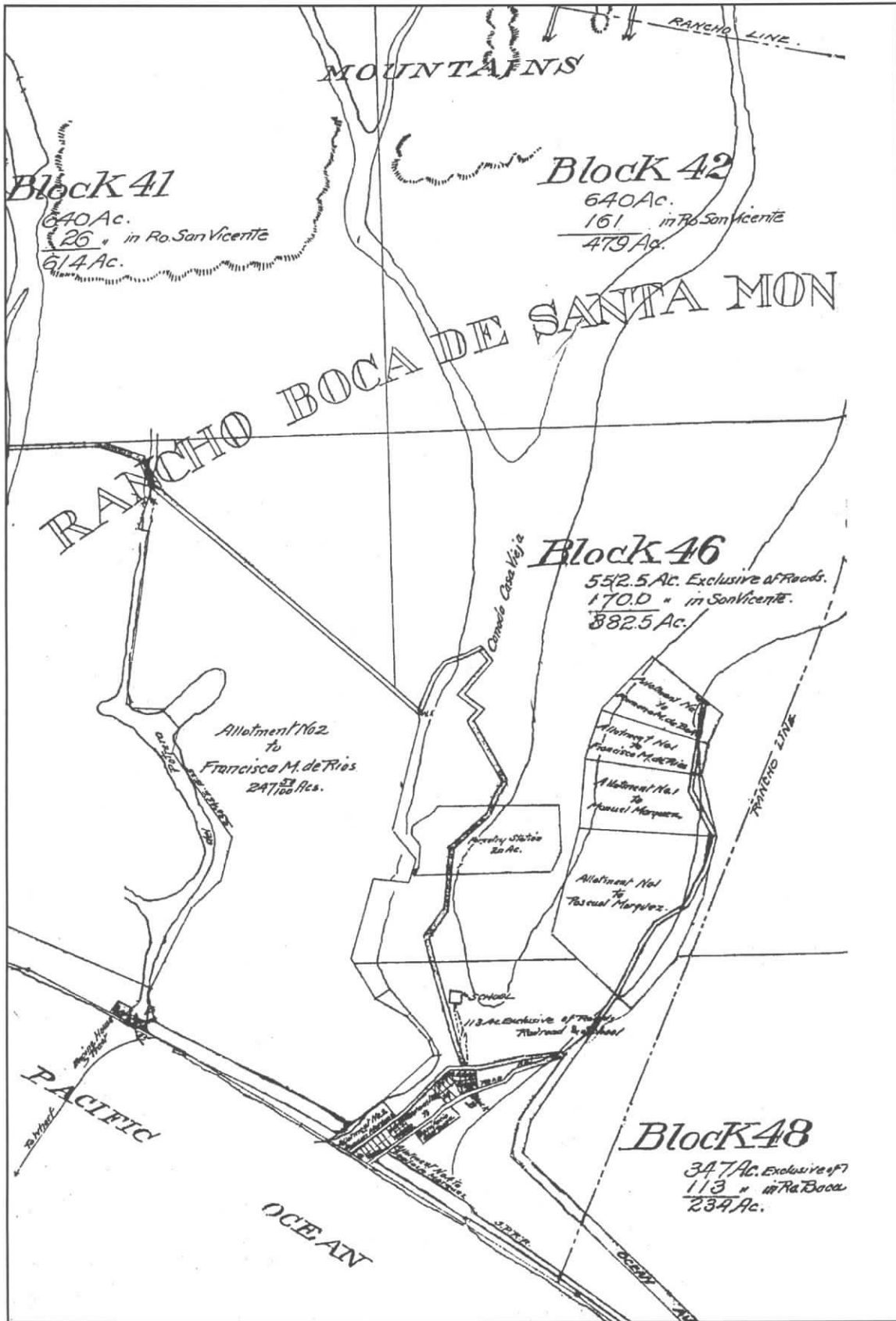
September 25, 2013



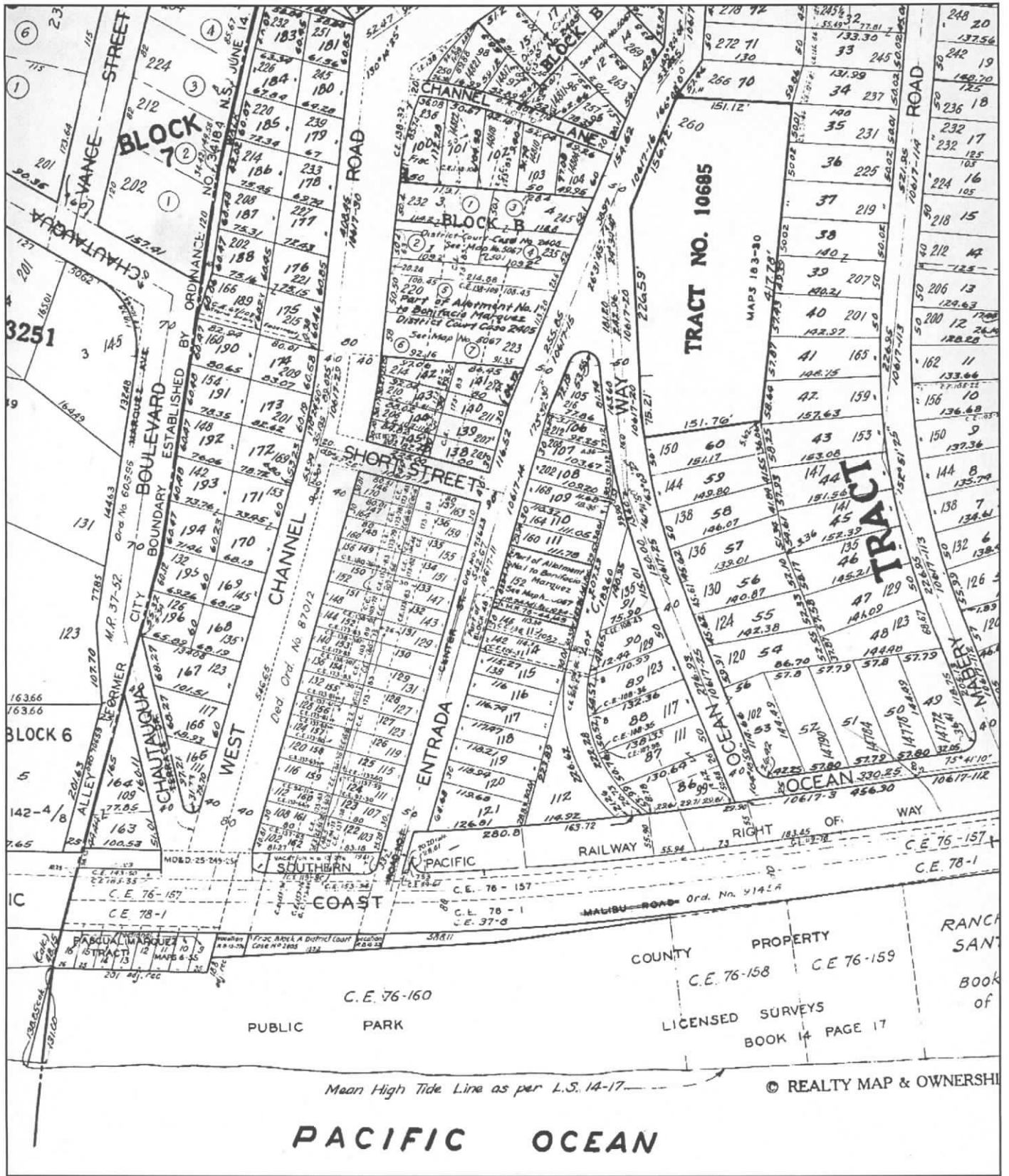
Ted's Grill, at the Present Location of the Golden Bull, During the 1938 Flood.



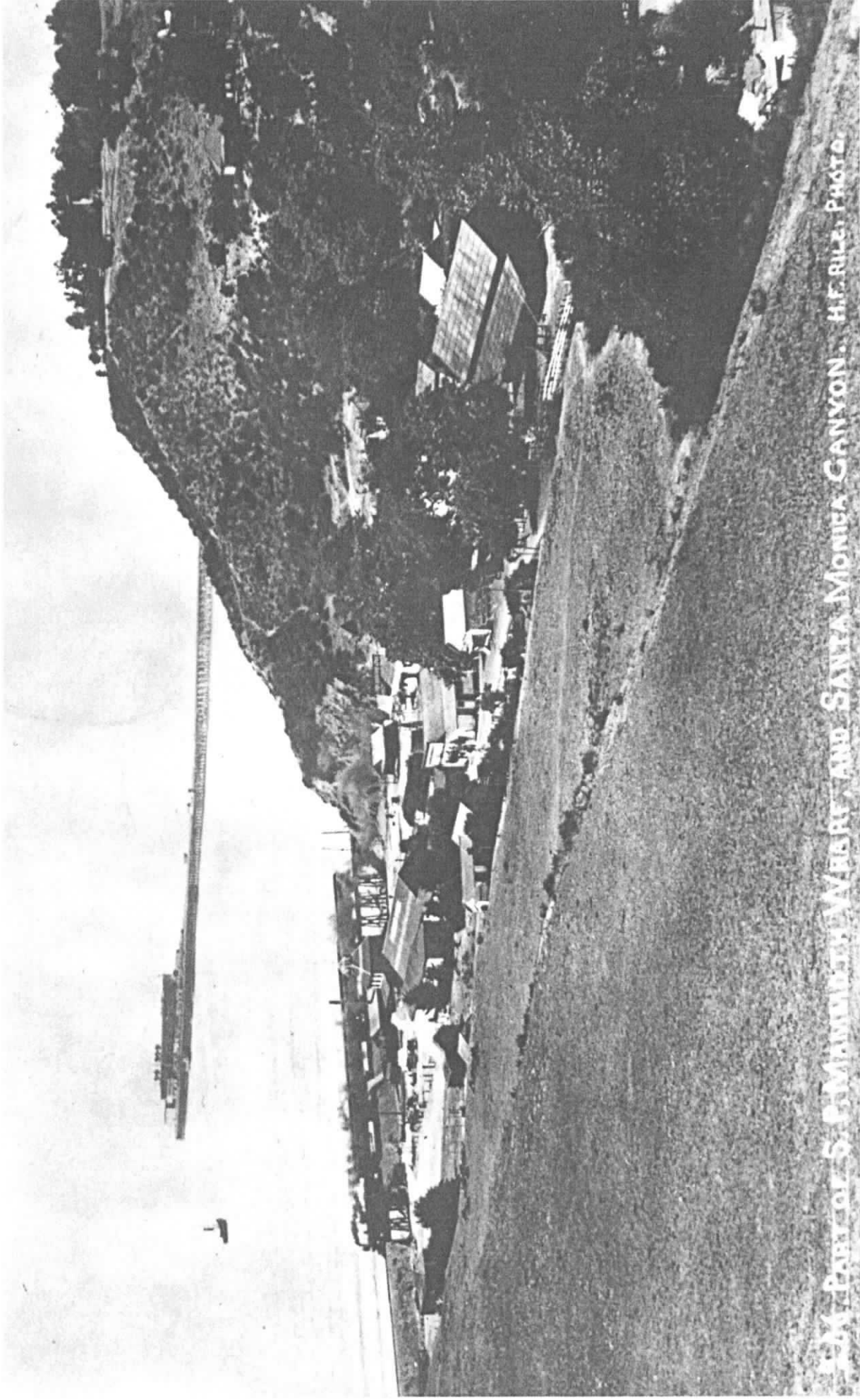
Channel Road During the 1938 Flood.



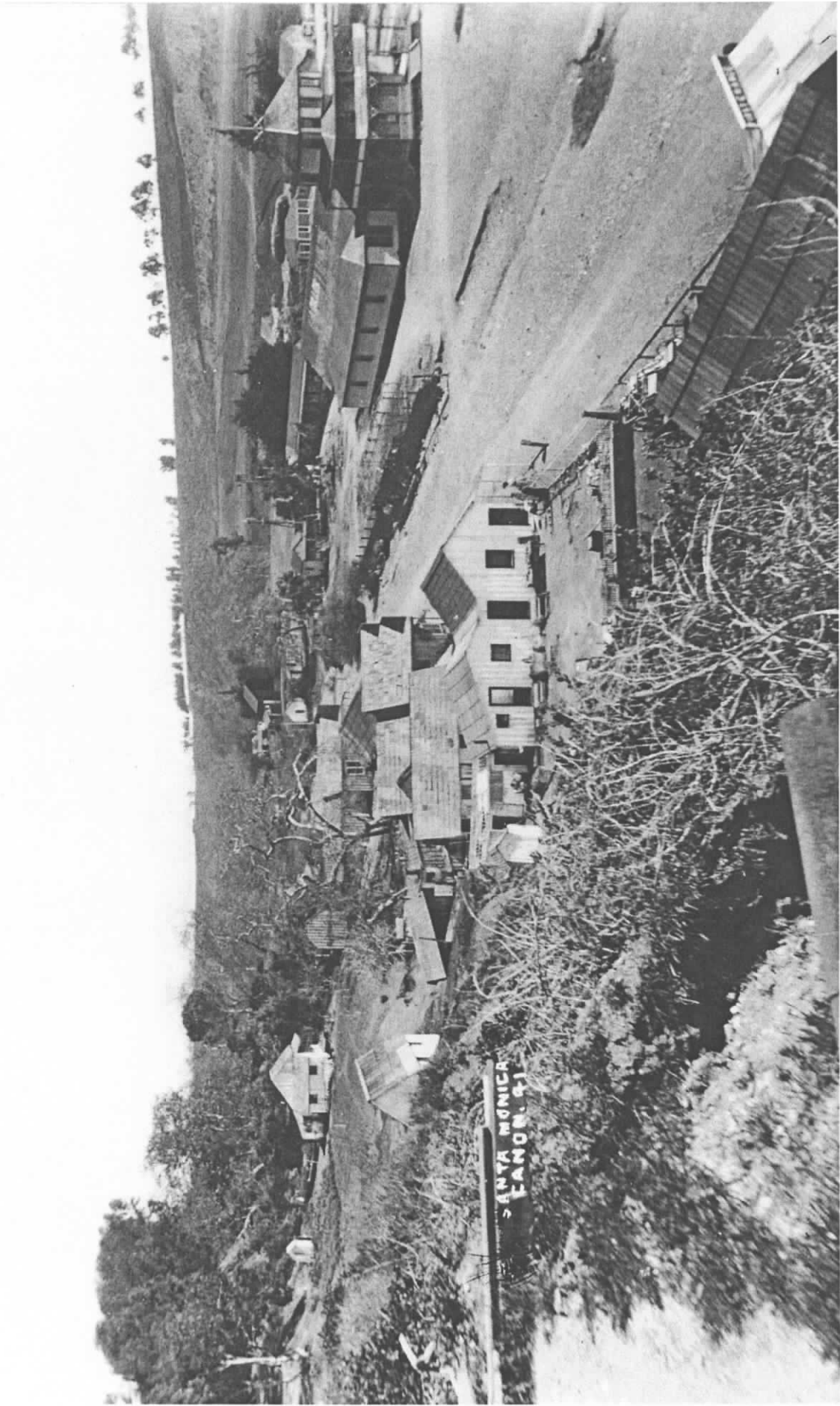
Land Grant Official Survey 1881.



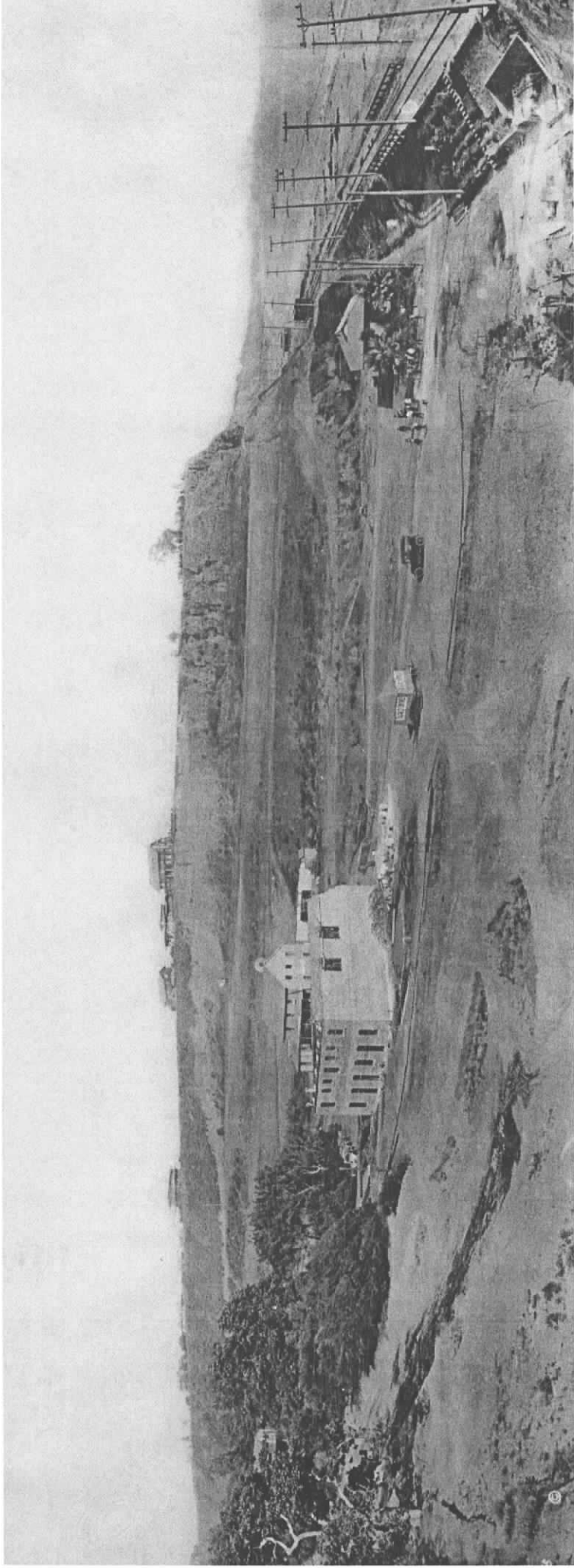
Tract Map from 1953



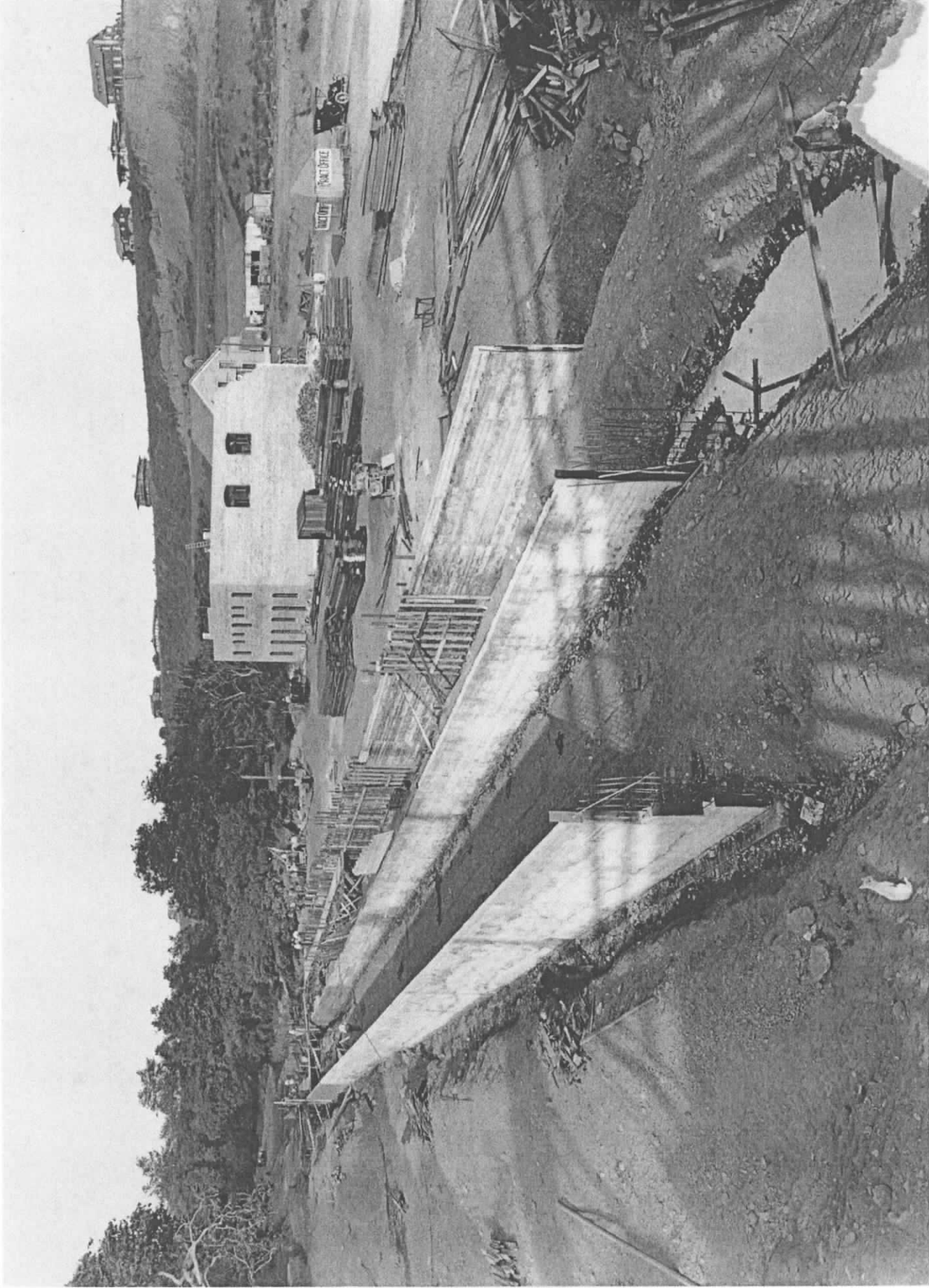
The Mouth of Santa Monica Canyon Circa 1894 with the Mile Long Wharf in the Background.



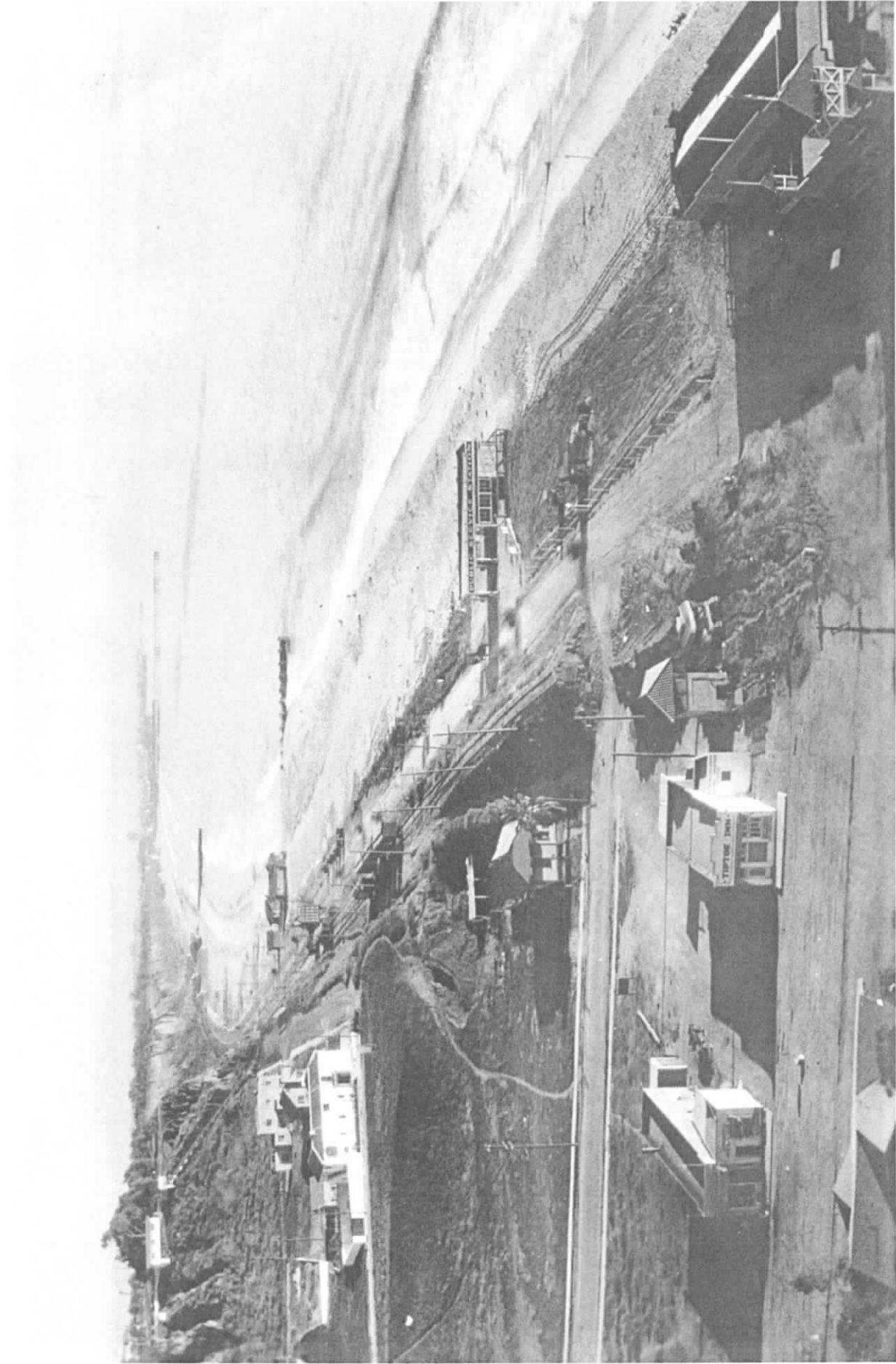
Channel Road Circa 1890.



Channel Road and PCH Circa 1930 with the Railroad Trestle Still in Place circa 1913



The Drainage Channel Which is Under Channel Road being Built Circa 1916.



Channel Road, Entrada Road and Pacific Coast Highway Circa 1923.



Doc Law's soon after Prohibition was Repealed in 1934.



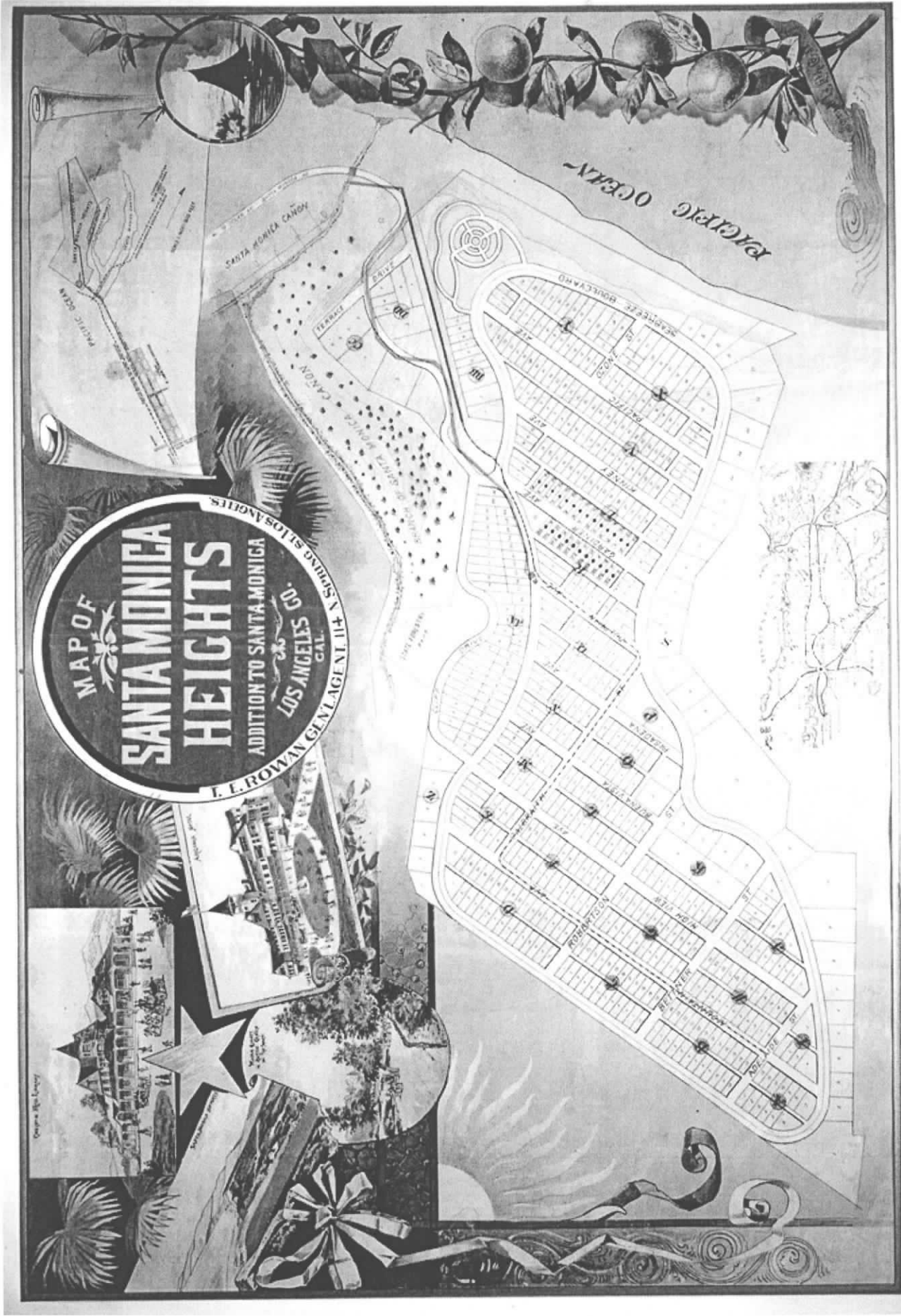
Doc Law with Bartender in 1943.



Channel Road and PCH Circa 1931 Showing the Railroad Right of Way and Huge Beach Traffic.



Channel Road and PCH Circa 1960 with the Railroad Tracks Removed.

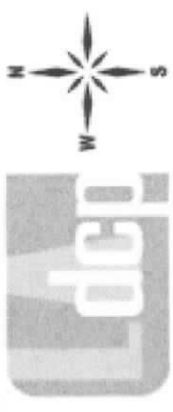
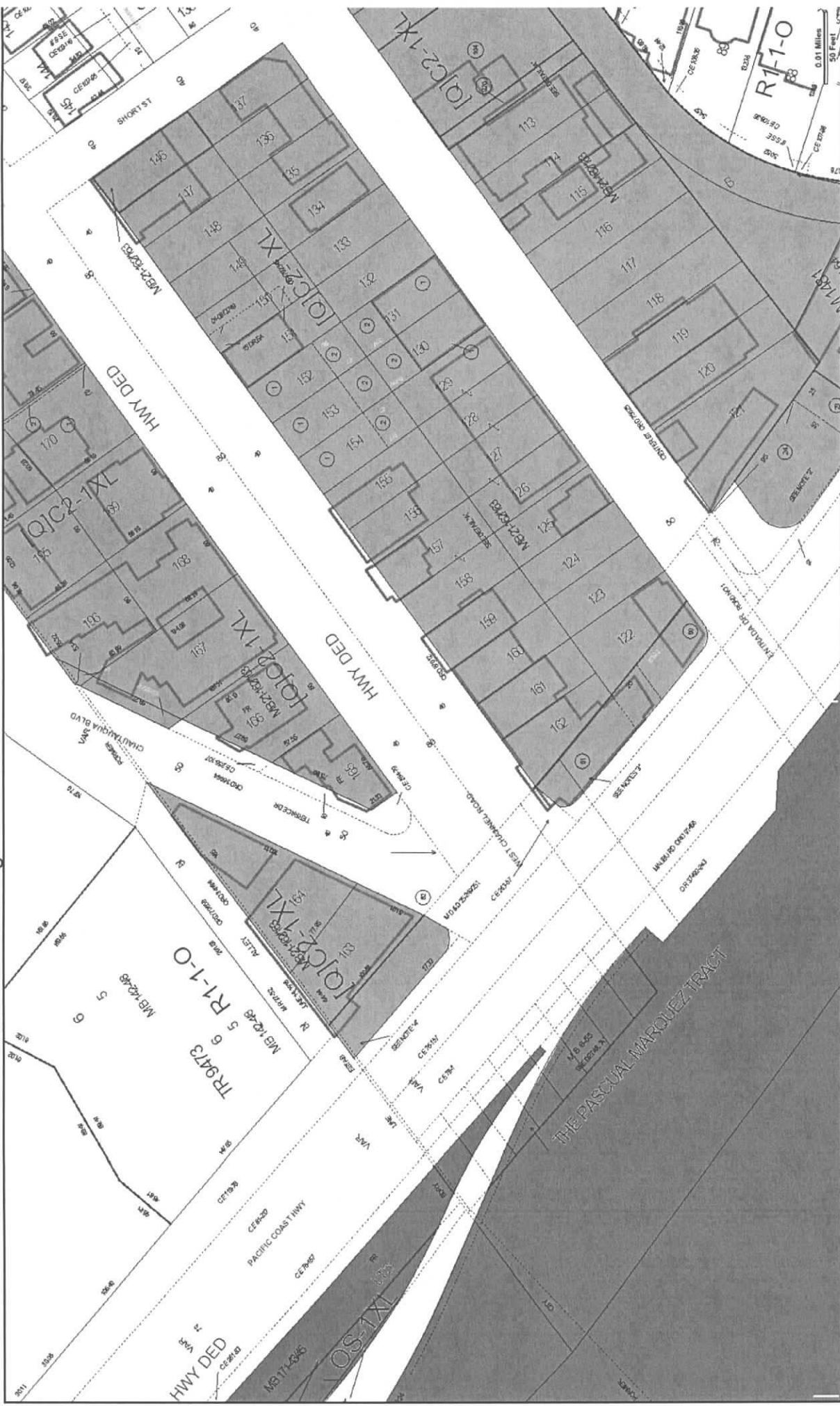


Abbot Kinney Late 1880s plans for the Area tha Became Huntington Palisades. Terrace Drive is now Chautauqua Blvd.

09/24/2013

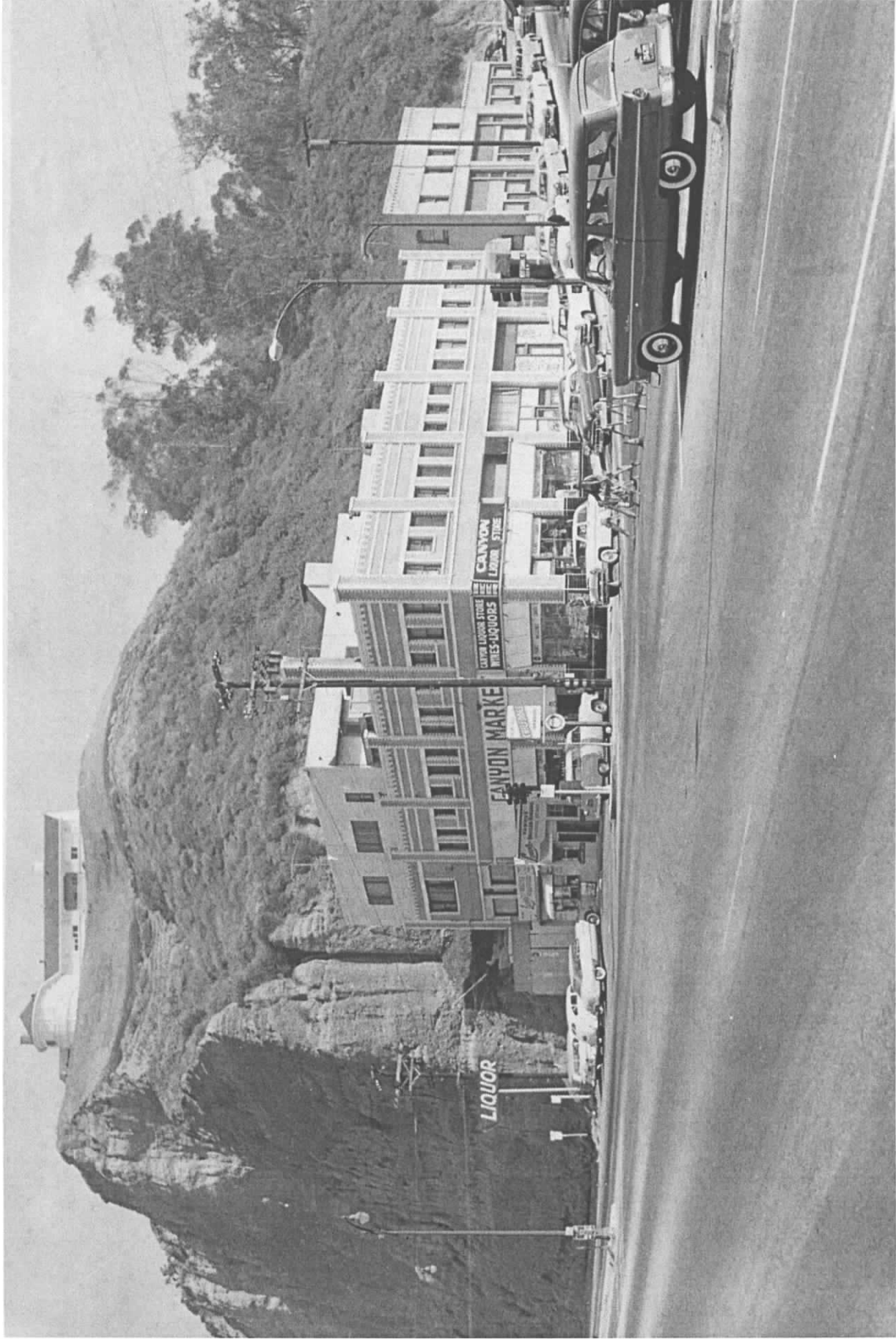
Generalized Zoning

ZIMAS PUBLIC



Zoning: [QJC2-1XL
General Plan: Neighborhood Commercial

Address: 170 N WEST CHANNEL ROAD Tract: TR 1719
APN: 4410010010 Block: None
PIN #: 120B129 22 Lot: 146
Arb: None



Chautauqua Blvd. is one of the Most Dangerous Intersections on Pacific Coast Highway. Traffic as it appeared in the early 1950s.



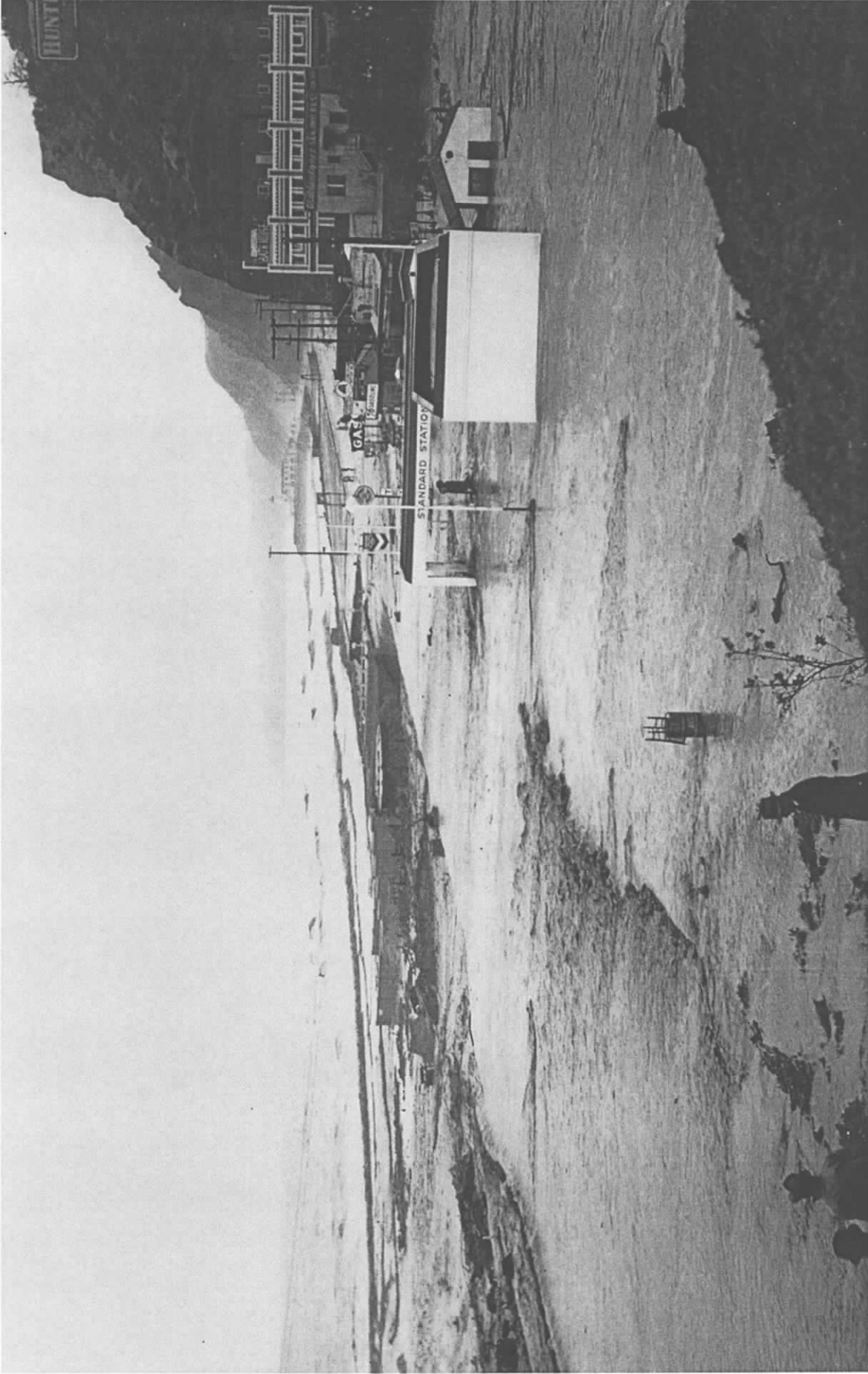
Aerial Mouth of Santa Monica Canyon circa 1925.



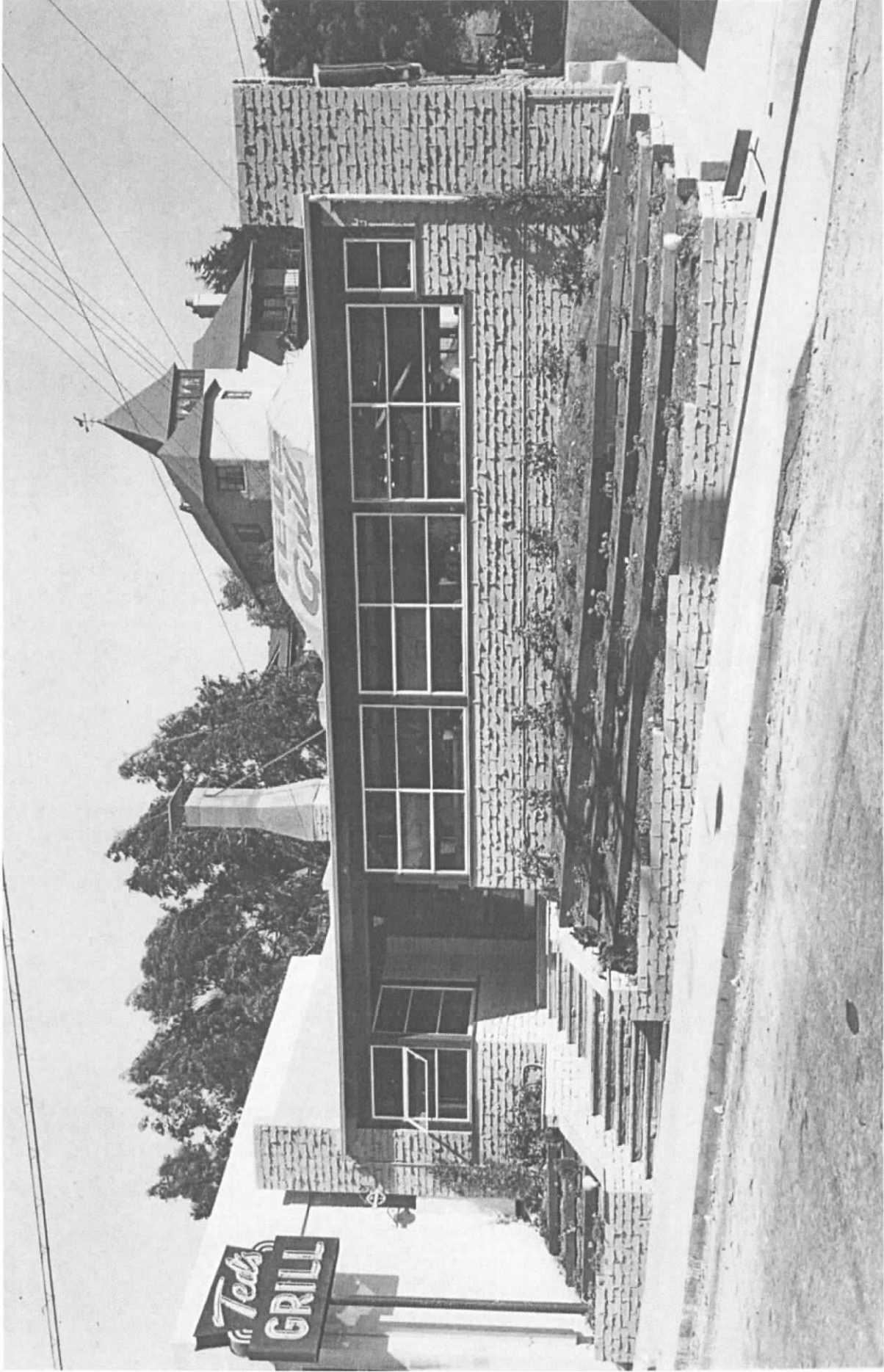
An Aerial Taken Just after the 1938 Flood as the Debris is Being Removed.



**Aerial Circa 1940 after the Channel had been Rerouted and the Roads
Moved and Repaired.**



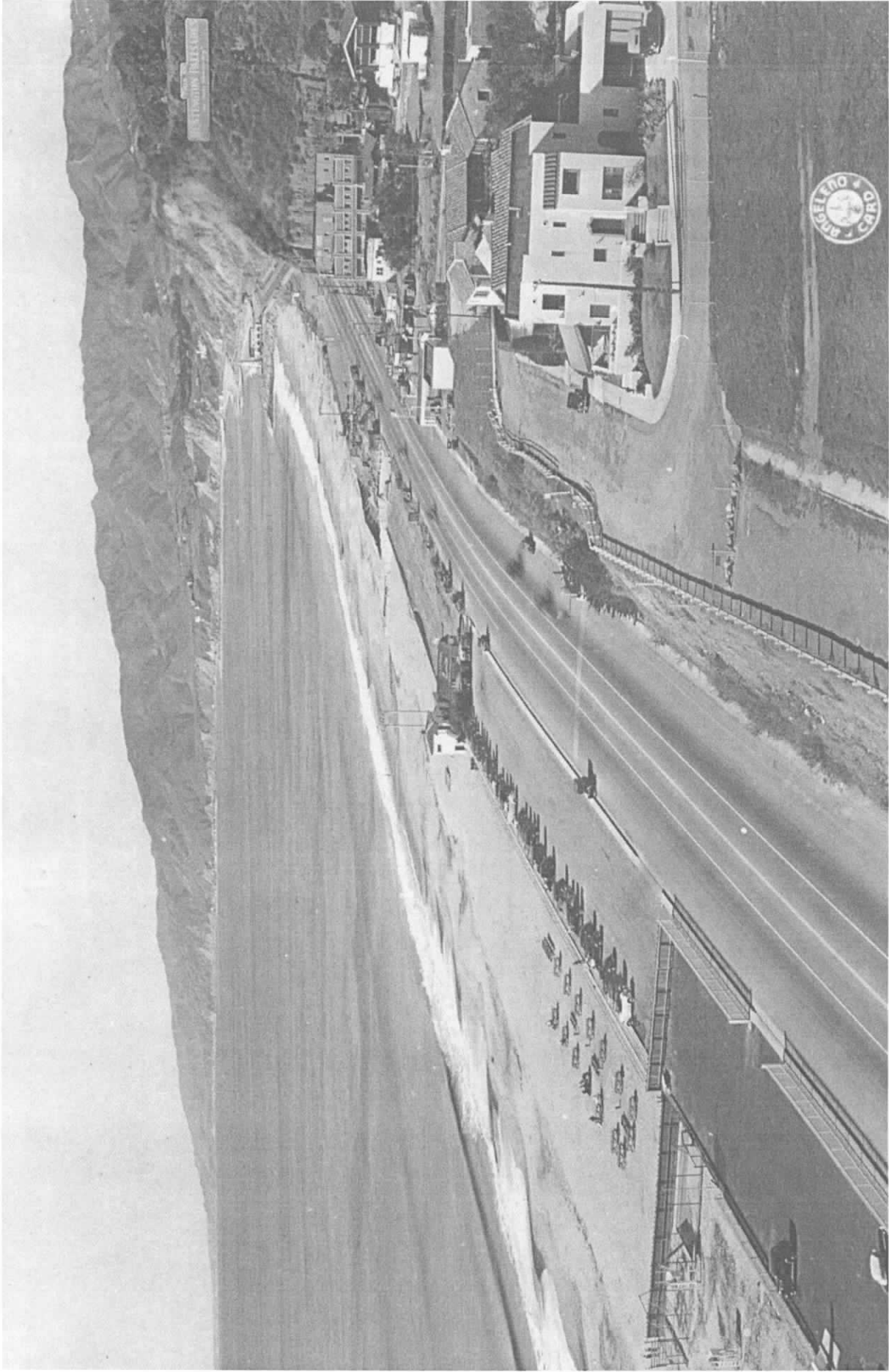
Flood of 1938 During the Height of the Storm at Pacific Coast Highway.



Ted's Grill was one of the Early and Most Beloved Restaurants on the West Side. Photo Circa 1950.



Ted's Grill photo Circa 1950.



View from Inspiration Point in Santa Monica circa 1933. View later Blocked by the Construction of the Penthouse Tower in the 1960s.



Santa Monica Canyon in 1892.